

Anti-CIB3 antibody (110-190 C-Term) (STJ92291)

STJ92291

GENERAL INFORMATION

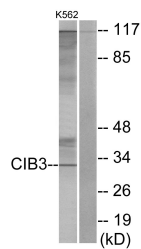
Product Type	Primary antibodies
Short Description	Rabbit polyclonal antibody anti-Calcium And Integrin-Binding Family Member 3 (110-190 C-Term) is suitable for use in Western Blot and ELISA research applications.
Applications	WB, ELISA
Host/Source	Rabbit
Reactivity	Human, Mouse

PRODUCT PROPERTIES

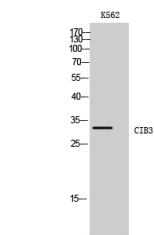
Clonality	Polyclonal
Clone ID	
Concentration	1 mg/mL
Conjugation	Unconjugated
Purification	The antibody was affinity-purified from rabbit anti-serum by affinity-chromatography.
Dilution Range	WB 1:500-1:2000 ELISA 1:20000
Formulation	PBS, 50% Glycerol, 0.5% BSA and 0.02% Sodium Azide.
Isotype	IgG
Storage Instruction	Store at -20°C for up to 1 year from the date of receipt, and avoid repeat freeze-thaw cycles.

TARGET INFORMATION

Gene ID	117286
Gene Symbol	CIB3
Uniprot ID	CIB3_HUMAN
Immunogen	The antiserum was produced against synthesized peptide derived from human CIB3 at amino acid range 138-187
Immunogen Region	110-190 C-Term
Specificity	CIB3 polyclonal antibody (Calcium And Integrin-Binding Family Member 3) binds to endogenous Calcium And Integrin-Binding Family Member 3 at the amino acid region 110-190 C-Term.
Immunogen Sequence	



Western blot analysis of lysates from K562 cells, using CIB3 Antibody. The lane on the right is blocked with the synthesized peptide.



Western blot analysis of K562 cells using CIB3 Polyclonal Antibody

This product is suitable for in-vitro studies under the RESEARCH USE ONLY [RUO] licence. This product must not be used as for diagnostic or other medical purposes.
St John's Laboratory Ltd, Knowledge Dock Business Centre, University Way, London, E16 2RD | Tel: 0208 223 3081