

Anti-CIB2 antibody (40-120 Internal) (STJ92290)

STJ92290

GENERAL INFORMATION

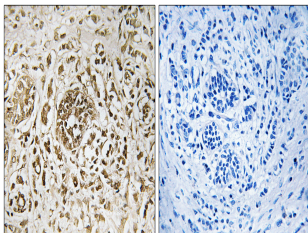
Product Type	Primary antibodies
Short Description	Rabbit polyclonal antibody anti-Calcium And Integrin-Binding Family Member 2 (40-120 Internal) is suitable for use in Immunohistochemistry, Immunofluorescence and ELISA research applications.
Applications	IHC-P, IF-P, ELISA
Host/Source	Rabbit
Reactivity	Human, Mouse, Rat

PRODUCT PROPERTIES

Clonality	Polyclonal
Clone ID	
Concentration	1 mg/mL
Conjugation	Unconjugated
Purification	The antibody was affinity-purified from rabbit anti-serum by affinity-chromatography.
Dilution Range	IHC 1:100-1:300 ELISA 1:5000
Formulation	PBS, 50% Glycerol, 0.5% BSA and 0.02% Sodium Azide.
Isotype	IgG
Storage Instruction	Store at -20°C for up to 1 year from the date of receipt, and avoid repeat freeze-thaw cycles.

TARGET INFORMATION

Gene ID	10518
Gene Symbol	CIB2
Uniprot ID	CIB2_HUMAN
Immunogen	The antiserum was produced against synthesized peptide derived from human CIB2 at amino acid range 21-70
Immunogen Region	40-120 Internal
Specificity	CIB2 polyclonal antibody (Calcium And Integrin-Binding Family Member 2) binds to endogenous Calcium And Integrin-Binding Family Member 2 at the amino acid region 40-120 Internal.
Immunogen Sequence	



Immunohistochemistry analysis of paraffin-embedded human breast carcinoma tissue, using CIB2 Antibody. The picture on the right is blocked with the synthesized peptide.