

Anti-CHSY1 antibody (310-390 Internal) (STJ92288)

STJ92288

GENERAL INFORMATION

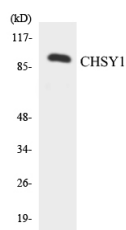
Product Type	Primary antibodies
Short Description	Rabbit polyclonal antibody anti-Chondroitin Sulfate Synthase 1 (310-390 Internal) is suitable for use in Western Blot, Immunohistochemistry, Immunofluorescence and ELISA research applications.
Applications	WB, IHC-P, IF-P, ELISA
Host/Source	Rabbit
Reactivity	Human, Mouse

PRODUCT PROPERTIES

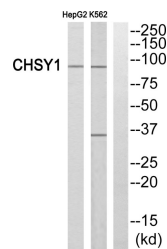
Clonality	Polyclonal
Clone ID	
Concentration	1 mg/mL
Conjugation	Unconjugated
Purification	The antibody was affinity-purified from rabbit anti-serum by affinity-chromatography.
Dilution Range	WB 1:500-1:2000 IHC 1:100-1:300 ELISA 1:10000
Formulation	PBS, 50% Glycerol, 0.5% BSA and 0.02% Sodium Azide.
Isotype	IgG
Storage Instruction	Store at -20°C for up to 1 year from the date of receipt, and avoid repeat freeze-thaw cycles.

TARGET INFORMATION

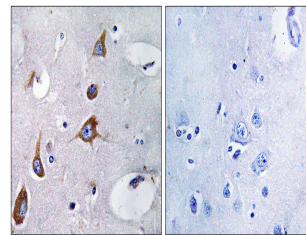
Gene ID	22856
Gene Symbol	CHSY1
Uniprot ID	CHSS1_HUMAN
Immunogen	The antiserum was produced against synthesized peptide derived from human CHSY1 at amino acid range 341-390
Immunogen Region	310-390 Internal
Specificity	CHSY1 polyclonal antibody (Chondroitin Sulfate Synthase 1) binds to endogenous Chondroitin Sulfate Synthase 1 at the amino acid region 310-390 Internal.
Immunogen Sequence	



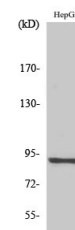
Western blot analysis of the lysates from HepG2 cells using CHSY1 antibody.



Western blot analysis of CHSY1 Antibody. The lane on the right is blocked with the CHSY1 peptide.



Immunohistochemistry analysis of paraffin-embedded human brain, using CHSY1 Antibody. The lane on the right is blocked with the CHSY1 peptide.



Western blot analysis of various cells using CHSY1 Polyclonal Antibody

This product is suitable for in-vitro studies under the RESEARCH USE ONLY [RUO] licence. This product must not be used as for diagnostic or other medical purposes.
St John's Laboratory Ltd, Knowledge Dock Business Centre, University Way, London, E16 2RD | Tel: 0208 223 3081