

Anti-CHST6 antibody (300-380 C-Term) (STJ92286)

STJ92286

GENERAL INFORMATION

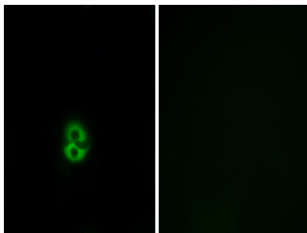
Product Type	Primary antibodies
Short Description	Rabbit polyclonal antibody anti-Carbohydrate Sulfotransferase 6 (300-380 C-Term) is suitable for use in Immunofluorescence, Immunocytochemistry and ELISA research applications.
Applications	IF, ICC, ELISA
Host/Source	Rabbit
Reactivity	Human, Rat, Mouse

PRODUCT PROPERTIES

Clonality	Polyclonal
Clone ID	
Concentration	1 mg/mL
Conjugation	Unconjugated
Purification	The antibody was affinity-purified from rabbit anti-serum by affinity-chromatography.
Dilution Range	IF 1:200-1:1000 ELISA 1:20000
Formulation	PBS, 50% Glycerol, 0.5% BSA and 0.02% Sodium Azide.
Isotype	IgG
Storage	Store at -20°C for up to 1 year from the date of receipt, and avoid repeat freeze-thaw cycles.
Instruction	

TARGET INFORMATION

Gene ID	4166
Gene Symbol	CHST6
Uniprot ID	CHST6_HUMAN
Immunogen	The antiserum was produced against synthesized peptide derived from human CHST6 at amino acid range 331-380
Immunogen Region	300-380 C-Term
Specificity	CHST6 polyclonal antibody (Carbohydrate Sulfotransferase 6) binds to endogenous Carbohydrate Sulfotransferase 6 at the amino acid region 300-380 C-Term.
Immunogen Sequence	



Immunofluorescence analysis of A549 cells, using CHST6 Antibody. The picture on the right is blocked with the synthesized peptide.