

## Anti-Choriogonadotropin Beta antibody (70-150 C-Term) (STJ92278)

STJ92278

### GENERAL INFORMATION

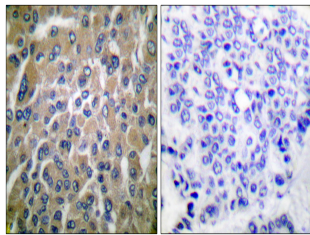
|                          |  |
|--------------------------|--|
| <b>Product Type</b>      | Primary antibodies   |
| <b>Short Description</b> | Rabbit polyclonal antibody anti-Choriogonadotropin Beta (70-150 C-Term) is suitable for use in Western Blot, Immunohistochemistry, Immunofluorescence and ELISA research applications. |
| <b>Applications</b>      | WB, IHC-P, IF-P, ELISA   |
| <b>Host/Source</b>       | Rabbit   |
| <b>Reactivity</b>        | Human, Rat, Mouse  |

### PRODUCT PROPERTIES

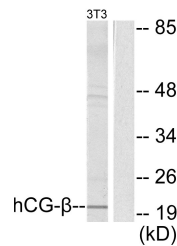
|                            |  |
|----------------------------|--|
| <b>Clonality</b>           | Polyclonal   |
| <b>Clone ID</b>            |  |
| <b>Concentration</b>       | 1 mg/mL  |
| <b>Conjugation</b>         | Unconjugated   |
| <b>Purification</b>        | The antibody was affinity-purified from rabbit anti-serum by affinity-chromatography.          |
| <b>Dilution Range</b>      | WB 1:500-1:2000<br>IHC 1:100-1:300<br>ELISA 1:10000  |
| <b>Formulation</b>         | PBS, 50% Glycerol, 0.5% BSA and 0.02% Sodium Azide.  |
| <b>Isotype</b>             | IgG  |
| <b>Storage Instruction</b> | Store at -20°C for up to 1 year from the date of receipt, and avoid repeat freeze-thaw cycles. |

### TARGET INFORMATION

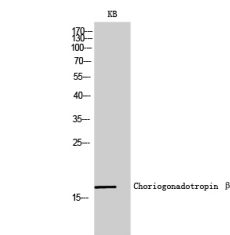
|                           |  |
|---------------------------|--|
| <b>Gene ID</b>            |  |
| <b>Gene Symbol</b>        |  |
| <b>Uniprot ID</b>         |  |
| <b>Immunogen</b>          | The antiserum was produced against synthesized peptide derived from human hCG beta at amino acid range 101-150   |
| <b>Immunogen Region</b>   | 70-150 C-Term  |
| <b>Specificity</b>        | Choriogonadotropin Beta polyclonal antibody (Choriogonadotropin Beta ) binds to endogenous Choriogonadotropin Beta at the amino acid region 70-150 C-Term. |
| <b>Immunogen Sequence</b> |  |



Immunohistochemistry analysis of paraffin-embedded human breast carcinoma tissue, using hCG beta Antibody. The picture on the right is blocked with the synthesized peptide.



Western blot analysis of lysates from NIH/3T3 cells, using hCG beta Antibody. The lane on the right is blocked with the synthesized peptide.



Western blot analysis of KB cells using Choriogonadotropin Beta Polyclonal Antibody diluted at 1: 2000

This product is suitable for in-vitro studies under the RESEARCH USE ONLY [RUO] licence. This product must not be used as for diagnostic or other medical purposes.  
St John's Laboratory Ltd, Knowledge Dock Business Centre, University Way, London, E16 2RD | Tel: 0208 223 3081