

## Anti-DDIT3 antibody (10-90) (STJ92277)

STJ92277

### GENERAL INFORMATION

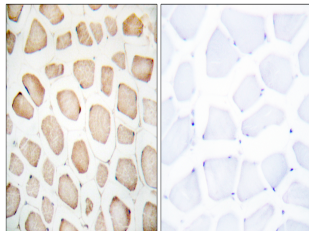
<b>Product Type</b>	Primary antibodies
<b>Short Description</b>	Rabbit polyclonal antibody anti-Dna Damage-Inducible Transcript 3 Protein (10-90) is suitable for use in Western Blot, Immunohistochemistry, Immunofluorescence, Immunocytochemistry and ELISA research applications.
<b>Applications</b>	WB, IHC-P, IF, ICC, ELISA
<b>Host/Source</b>	Rabbit
<b>Reactivity</b>	Human, Mouse

### PRODUCT PROPERTIES

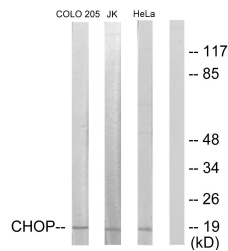
<b>Clonality</b>	Polyclonal
<b>Clone ID</b>	
<b>Concentration</b>	1 mg/mL
<b>Conjugation</b>	Unconjugated
<b>Purification</b>	The antibody was affinity-purified from rabbit anti-serum by affinity-chromatography.
<b>Dilution Range</b>	WB 1:500-1:2000 IHC 1:100-1:300 IF 1:200-1:1000 ELISA 1:5000
<b>Formulation</b>	PBS, 50% Glycerol, 0.5% BSA and 0.02% Sodium Azide.
<b>Isotype</b>	IgG
<b>Storage Instruction</b>	Store at -20°C for up to 1 year from the date of receipt, and avoid repeat freeze-thaw cycles.

### TARGET INFORMATION

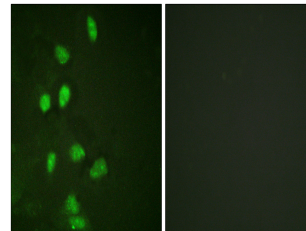
<b>Gene ID</b>	1649
<b>Gene Symbol</b>	DDIT3
<b>Uniprot ID</b>	DDIT3_HUMAN
<b>Immunogen</b>	The antiserum was produced against synthesized peptide derived from human CHOP at amino acid range 15-64
<b>Immunogen Region</b>	10-90
<b>Specificity</b>	DDIT3 polyclonal antibody (Dna Damage-Inducible Transcript 3 Protein) binds to endogenous Dna Damage-Inducible Transcript 3 Protein at the amino acid region 10-90.
<b>Immunogen Sequence</b>	



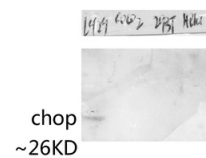
Immunohistochemistry analysis of paraffin-embedded human skeletal muscle tissue, using CHOP Antibody. The picture on the right is blocked with the synthesized peptide.



Western blot analysis of lysates from HeLa, Jurkat, and COLO205 cells, using CHOP Antibody. The lane on the right is blocked with the synthesized peptide.



Immunofluorescence analysis of HeLa cells, using CHOP Antibody. The picture on the right is blocked with the synthesized peptide.



Western blot analysis of various lysis using CHOP Polyclonal Antibody diluted at 1: 500. Secondary antibody was diluted at 1:20000

This product is suitable for in-vitro studies under the RESEARCH USE ONLY [RUO] licence. This product must not be used as for diagnostic or other medical purposes.  
St John's Laboratory Ltd, Knowledge Dock Business Centre, University Way, London, E16 2RD | Tel: 0208 223 3081