

Anti-CHEK2 antibody (460-540) (STJ92271)

STJ92271

GENERAL INFORMATION

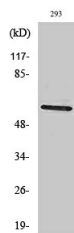
Product Type	Primary antibodies
Short Description	Rabbit polyclonal antibody anti-Serine/Threonine-Protein Kinase Chk2 (460-540) is suitable for use in Western Blot and ELISA research applications.
Applications	WB, ELISA
Host/Source	Rabbit
Reactivity	Human, Rat, Mouse

PRODUCT PROPERTIES

Clonality	Polyclonal
Clone ID	
Concentration	1 mg/mL
Conjugation	Unconjugated
Purification	The antibody was affinity-purified from rabbit anti-serum by affinity-chromatography.
Dilution Range	WB 1:500-1:2000 ELISA 1:20000
Formulation	PBS, 50% Glycerol, 0.5% BSA and 0.02% Sodium Azide.
Isotype	IgG
Storage	Store at -20°C for up to 1 year from the date of receipt, and avoid repeat freeze-thaw cycles.
Instruction	

TARGET INFORMATION

Gene ID	11200
Gene Symbol	CHEK2
Uniprot ID	CHEK2_HUMAN
Immunogen	The antiserum was produced against synthesized peptide derived from human CHEK2 at amino acid range 486-535
Immunogen Region	460-540
Specificity	CHEK2 polyclonal antibody (Serine/Threonine-Protein Kinase Chk2) binds to endogenous Serine/Threonine-Protein Kinase Chk2 at the amino acid region 460-540.
Immunogen Sequence	



Western blot analysis of various cells using Chk2 Polyclonal Antibody cells nucleus extracted by Minute TM Cytoplasmic and Nuclear Fractionation kit (SC-003, Inventibiotech, MN, USA).

This product is suitable for in-vitro studies under the RESEARCH USE ONLY [RUO] licence. This product must not be used as for diagnostic or other medical purposes.
St John's Laboratory Ltd, Knowledge Dock Business Centre, University Way, London, E16 2RD | Tel: 0208 223 3081