

## Anti-CHEK1 antibody (280-360) (STJ92269)

STJ92269

### GENERAL INFORMATION

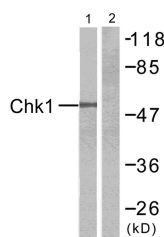
<b>Product Type</b>	Primary antibodies
<b>Short Description</b>	Rabbit polyclonal antibody anti-Serine/Threonine-Protein Kinase Chk1 (280-360) is suitable for use in Western Blot, Immunohistochemistry, Immunofluorescence and ELISA research applications.
<b>Applications</b>	WB, IHC-P, IF-P, ELISA
<b>Host/Source</b>	Rabbit
<b>Reactivity</b>	Human, Mouse, Rat

### PRODUCT PROPERTIES

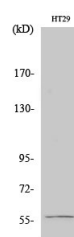
<b>Clonality</b>	Polyclonal
<b>Clone ID</b>	
<b>Concentration</b>	1 mg/mL
<b>Conjugation</b>	Unconjugated
<b>Purification</b>	The antibody was affinity-purified from rabbit anti-serum by affinity-chromatography.
<b>Dilution Range</b>	WB 1:500-1:2000 IHC 1:100-1:300 ELISA 1:40000
<b>Formulation</b>	PBS, 50% Glycerol, 0.5% BSA and 0.02% Sodium Azide.
<b>Isotype</b>	IgG
<b>Storage Instruction</b>	Store at -20°C for up to 1 year from the date of receipt, and avoid repeat freeze-thaw cycles.

### TARGET INFORMATION

<b>Gene ID</b>	1111
<b>Gene Symbol</b>	CHEK1
<b>Uniprot ID</b>	CHK1_HUMAN
<b>Immunogen</b>	The antiserum was produced against synthesized peptide derived from human Chk1 at amino acid range 310-359
<b>Immunogen Region</b>	280-360
<b>Specificity</b>	CHEK1 polyclonal antibody (Serine/Threonine-Protein Kinase Chk1) binds to endogenous Serine/Threonine-Protein Kinase Chk1 at the amino acid region 280-360.
<b>Immunogen Sequence</b>	



Western blot analysis of lysates from HT-29 cells, treated with UV, using Chk1 Antibody. The lane on the right is blocked with the synthesized peptide.



Western blot analysis of various cells using Chk1 Polyclonal Antibody diluted at 1: 500