

Anti-CHEK1 antibody (240-320) (STJ92266)

STJ92266

GENERAL INFORMATION

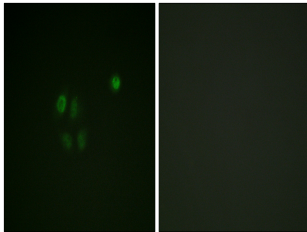
| | |
|--------------------------|--|
| Product Type | Primary antibodies |
| Short Description | Rabbit polyclonal antibody anti-Serine/Threonine-Protein Kinase Chk1 (240-320) is suitable for use in Western Blot, Immunofluorescence, Immunocytochemistry and ELISA research applications. |
| Applications | WB, IF, ICC, ELISA |
| Host/Source | Rabbit |
| Reactivity | Human, Mouse, Rat |

PRODUCT PROPERTIES

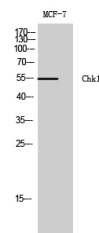
| | |
|----------------------------|--|
| Clonality | Polyclonal |
| Clone ID | |
| Concentration | 1 mg/mL |
| Conjugation | Unconjugated |
| Purification | The antibody was affinity-purified from rabbit anti-serum by affinity-chromatography. |
| Dilution Range | WB 1:500-1:2000 IF 1:200-1:1000 ELISA 1:10000 |
| Formulation | PBS, 50% Glycerol, 0.5% BSA and 0.02% Sodium Azide. |
| Isotype | IgG |
| Storage Instruction | Store at -20°C for up to 1 year from the date of receipt, and avoid repeat freeze-thaw cycles. |

TARGET INFORMATION

| | |
|---------------------------|---|
| Gene ID | 1111 |
| Gene Symbol | CHEK1 |
| Uniprot ID | CHK1_HUMAN |
| Immunogen | The antiserum was produced against synthesized peptide derived from human Chk1 at amino acid range 271-320 |
| Immunogen Region | 240-320 |
| Specificity | CHEK1 polyclonal antibody (Serine/Threonine-Protein Kinase Chk1) binds to endogenous Serine/Threonine-Protein Kinase Chk1 at the amino acid region 240-320. |
| Immunogen Sequence | |



Immunofluorescence analysis of A549 cells, using Chk1 Antibody. The picture on the right is blocked with the synthesized peptide.



Western blot analysis of MCF-7 cells using Chk1 Polyclonal Antibody diluted at 1: 500

This product is suitable for in-vitro studies under the RESEARCH USE ONLY [RUO] licence. This product must not be used as for diagnostic or other medical purposes.
St John's Laboratory Ltd, Knowledge Dock Business Centre, University Way, London, E16 2RD | Tel: 0208 223 3081