

Anti-ACKR2 antibody (310-390 C-Term) (STJ92260)

STJ92260

GENERAL INFORMATION

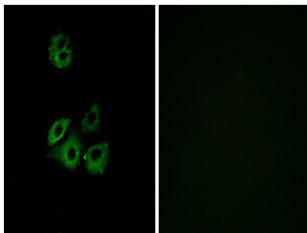
Product Type	Primary antibodies
Short Description	Rabbit polyclonal antibody anti-Atypical Chemokine Receptor 2 (310-390 C-Term) is suitable for use in Immunofluorescence, Immunocytochemistry and ELISA research applications.
Applications	IF, ICC, ELISA
Host/Source	Rabbit
Reactivity	Human, Rat, Mouse

PRODUCT PROPERTIES

Clonality	Polyclonal
Clone ID	
Concentration	1 mg/mL
Conjugation	Unconjugated
Purification	The antibody was affinity-purified from rabbit anti-serum by affinity-chromatography.
Dilution Range	IF 1:200-1:1000 ELISA 1:20000
Formulation	PBS, 50% Glycerol, 0.5% BSA and 0.02% Sodium Azide.
Isotype	IgG
Storage	Store at -20°C for up to 1 year from the date of receipt, and avoid repeat freeze-thaw cycles.
Instruction	

TARGET INFORMATION

Gene ID	1238
Gene Symbol	ACKR2
Uniprot ID	ACKR2_HUMAN
Immunogen	The antiserum was produced against synthesized peptide derived from human CCBP2 at amino acid range 335-384
Immunogen Region	310-390 C-Term
Specificity	ACKR2 polyclonal antibody (Atypical Chemokine Receptor 2) binds to endogenous Atypical Chemokine Receptor 2 at the amino acid region 310-390 C-Term.
Immunogen Sequence	



Immunofluorescence analysis of A549 cells, using CCBP2 Antibody. The picture on the right is blocked with the synthesized peptide.