

Anti-PRKG2 antibody (360-440 Internal) (STJ92257)

STJ92257

GENERAL INFORMATION

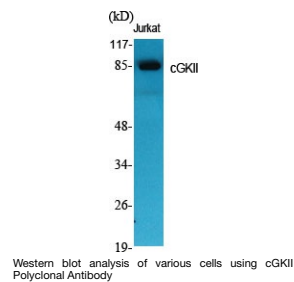
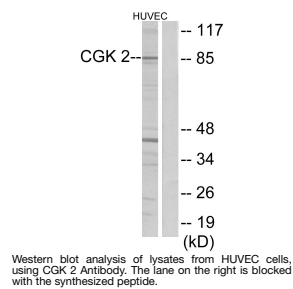
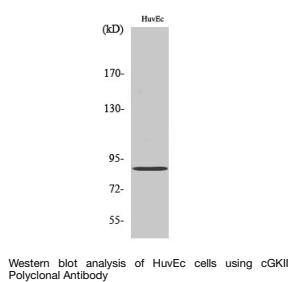
Product Type	Primary antibodies
Short Description	Rabbit polyclonal antibody anti-Cgmp-Dependent Protein Kinase 2 (360-440 Internal) is suitable for use in Western Blot, Immunohistochemistry, Immunofluorescence and ELISA research applications.
Applications	WB, IHC-P, IF-P, ELISA
Host/Source	Rabbit
Reactivity	Human, Mouse, Rat

PRODUCT PROPERTIES

Clonality	Polyclonal
Clone ID	
Concentration	1 mg/mL
Conjugation	Unconjugated
Purification	The antibody was affinity-purified from rabbit anti-serum by affinity-chromatography.
Dilution Range	WB 1:500-1:2000 IHC 1:100-1:300 ELISA 1:20000
Formulation	PBS, 50% Glycerol, 0.5% BSA and 0.02% Sodium Azide.
Isotype	IgG
Storage Instruction	Store at 20°C for up to 1 year from the date of receipt, and avoid repeat freeze-thaw cycles.

TARGET INFORMATION

Gene ID	5593
Gene Symbol	PRKG2
Uniprot ID	KGP2_HUMAN
Immunogen	The antiserum was produced against synthesized peptide derived from human CGK 2 at amino acid range 391-440
Immunogen Region	360-440 Internal
Specificity	PRKG2 polyclonal antibody (Cgmp-Dependent Protein Kinase 2) binds to endogenous Cgmp-Dependent Protein Kinase 2 at the amino acid region 360-440 Internal.
Immunogen Sequence	



This product is suitable for in-vitro studies under the RESEARCH USE ONLY [RUO] licence. This product must not be used as for diagnostic or other medical purposes.
 St John's Laboratory Ltd, Knowledge Dock Business Centre, University Way, London, E16 2RD | Tel: 0208 223 3081