

Anti-CGI-43 antibody (390-470 C-Term) (STJ92255)

STJ92255

GENERAL INFORMATION

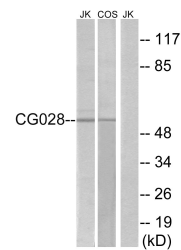
Product Type	Primary antibodies
Short Description	Rabbit polyclonal antibody anti-Vacuolar fusion protein CCZ1 homolog and Vacuolar fusion protein CCZ1 homolog B (390-470 C-Term) is suitable for use in Western Blot and ELISA research applications.
Applications	WB, ELISA
Host/Source	Rabbit
Reactivity	Human, Mouse, Monkey

PRODUCT PROPERTIES

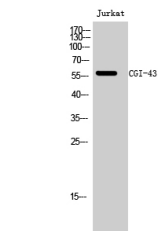
Clonality	Polyclonal
Clone ID	
Concentration	1 mg/mL
Conjugation	Unconjugated
Purification	The antibody was affinity-purified from rabbit anti-serum by affinity-chromatography.
Dilution	WB 1:500-1:2000
Range	ELISA 1:10000
Formulation	PBS, 50% Glycerol, 0.5% BSA and 0.02% Sodium Azide.
Isotype	IgG
Storage	Store at -20°C for up to 1 year from the date of receipt, and avoid repeat freeze-thaw cycles.
Instruction	

TARGET INFORMATION

Gene ID	221960/51622 221960/51622
Gene Symbol	CCZ1 CCZ1B
Uniprot ID	CCZ1_HUMAN CCZ1B_HUMAN
Immunogen	The antiserum was produced against synthesized peptide derived from human CG028 at amino acid range 411-460
Immunogen Region	390-470 C-Term
Specificity	CGI-43 polyclonal antibody (Vacuolar fusion protein CCZ1 homolog and Vacuolar fusion protein CCZ1 homolog B) binds to endogenous Vacuolar fusion protein CCZ1 homolog and Vacuolar fusion protein CCZ1 homolog B at the amino acid region 390-470 C-Term.
Immunogen Sequence	



Western blot analysis of lysates from Jurkat and COS cells, using CG028 Antibody. The lane on the right is blocked with the synthesized peptide.



Western blot analysis of Jurkat cells using CGI-43 Polyclonal Antibody diluted at 1: 500

This product is suitable for in-vitro studies under the RESEARCH USE ONLY [RUO] licence. This product must not be used as for diagnostic or other medical purposes.
St John's Laboratory Ltd, Knowledge Dock Business Centre, University Way, London, E16 2RD | Tel: 0208 223 3081