

Anti-CFTR antibody (680-760) (STJ92253)

STJ92253

GENERAL INFORMATION

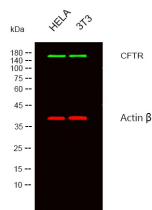
| | |
|--------------------------|--------------------------------------------------------------------------------------------------------------------------------------------------------------------------------------------------------------|
| Product Type | Primary antibodies |
| Short Description | Rabbit polyclonal antibody anti-Cystic Fibrosis Transmembrane Conductance Regulator (680-760) is suitable for use in Western Blot, Immunohistochemistry, Immunofluorescence and ELISA research applications. |
| Applications | WB, IHC-P, IF-P, ELISA |
| Host/Source | Rabbit |
| Reactivity | Human, Mouse, Rat |

PRODUCT PROPERTIES

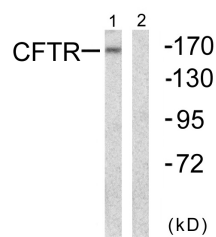
| | |
|----------------------------|------------------------------------------------------------------------------------------------|
| Clonality | Polyclonal |
| Clone ID | |
| Concentration | 1 mg/mL |
| Conjugation | Unconjugated |
| Purification | The antibody was affinity-purified from rabbit anti-serum by affinity-chromatography. |
| Dilution Range | WB 1:500-1:2000 IHC 1:100-1:300 ELISA 1:5000 |
| Formulation | PBS, 50% Glycerol, 0.5% BSA and 0.02% Sodium Azide. |
| Isotype | IgG |
| Storage Instruction | Store at -20°C for up to 1 year from the date of receipt, and avoid repeat freeze-thaw cycles. |

TARGET INFORMATION

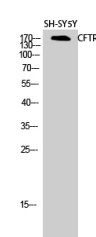
| | |
|---------------------------|------------------------------------------------------------------------------------------------------------------------------------------------------------------------------------------|
| Gene ID | 1080 |
| Gene Symbol | CFTR |
| Uniprot ID | CFTR_HUMAN |
| Immunogen Region | The antiserum was produced against synthesized peptide derived from human CFTR at amino acid range 711-760 |
| Immunogen Region | 680-760 |
| Specificity | CFTR polyclonal antibody (Cystic Fibrosis Transmembrane Conductance Regulator) binds to endogenous Cystic Fibrosis Transmembrane Conductance Regulator at the amino acid region 680-760. |
| Immunogen Sequence | |



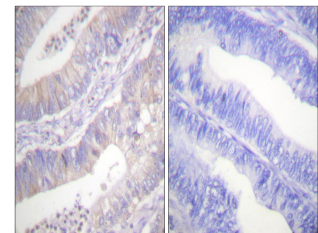
Western blot analysis of lysates from HELA, 3T3 cells. (Green) primary antibody was diluted at 1:1000, 4°C over night, secondary antibody was diluted at 1:10000, 37°C 1hour. (Red) loading control antibody was diluted at 1:5000 as loading control, 4°C over night, secondary antibody was diluted at 1:10000, 37°C 1hour.



Western blot analysis of lysates from NIH/3T3 cells, using CFTR Antibody. The lane on the right is blocked with the synthesized peptide.



Western blot analysis of SH-SY5Y cells using CFTR Polyclonal Antibody diluted at 1: 2000



Immunohistochemistry analysis of paraffin-embedded human colon carcinoma tissue, using CFTR Antibody. The picture on the right is blocked with the synthesized peptide.

This product is suitable for in-vitro studies under the RESEARCH USE ONLY [RUO] licence. This product must not be used as for diagnostic or other medical purposes.
St John's Laboratory Ltd, Knowledge Dock Business Centre, University Way, London, E16 2RD | Tel: 0208 223 3081