

Anti-FGR antibody (30-110 Internal) (STJ92240)

STJ92240

GENERAL INFORMATION

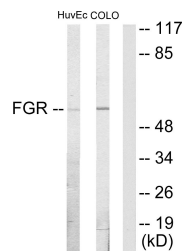
Product Type	Primary antibodies
Short Description	Rabbit polyclonal antibody anti-Tyrosine-Protein Kinase Fgr (30-110 Internal) is suitable for use in Western Blot, Immunohistochemistry, Immunofluorescence and ELISA research applications.
Applications	WB, IHC-P, IF-P, ELISA
Host/Source	Rabbit
Reactivity	Human, Mouse, Rat

PRODUCT PROPERTIES

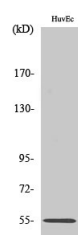
Clonality	Polyclonal
Clone ID	
Concentration	1 mg/mL
Conjugation	Unconjugated
Purification	The antibody was affinity-purified from rabbit anti-serum by affinity-chromatography.
Dilution Range	WB 1:500-1:2000 IHC 1:100-1:300 ELISA 1:5000
Formulation	PBS, 50% Glycerol, 0.5% BSA and 0.02% Sodium Azide.
Isotype	IgG
Storage Instruction	Store at -20°C for up to 1 year from the date of receipt, and avoid repeat freeze-thaw cycles.

TARGET INFORMATION

Gene ID	2268
Gene Symbol	FGR
Uniprot ID	FGR_HUMAN
Immunogen	The antiserum was produced against synthesized peptide derived from human FGR at amino acid range 61-110
Immunogen Region	30-110 Internal
Specificity	FGR polyclonal antibody (Tyrosine-Protein Kinase Fgr) binds to endogenous Tyrosine-Protein Kinase Fgr at the amino acid region 30-110 Internal.
Immunogen Sequence	



Western blot analysis of lysates from HUVEC and COLO205 cells, using FGR Antibody. The lane on the right is blocked with the synthesized peptide.



Western blot analysis of various cells using c-Fgr Polyclonal Antibody

This product is suitable for in-vitro studies under the RESEARCH USE ONLY [RUO] licence. This product must not be used as for diagnostic or other medical purposes.
St John's Laboratory Ltd, Knowledge Dock Business Centre, University Way, London, E16 2RD | Tel: 0208 223 3081