

Anti-CBLN2 antibody (130-210 C-Term) (STJ92234)

STJ92234

GENERAL INFORMATION

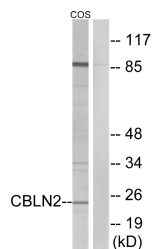
Product Type	Primary antibodies
Short Description	Rabbit polyclonal antibody anti-Cerebellin-2 (130-210 C-Term) is suitable for use in Western Blot and ELISA research applications.
Applications	WB, ELISA
Host/Source	Rabbit
Reactivity	Human, Mouse, Rat, Monkey

PRODUCT PROPERTIES

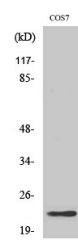
Clonality	Polyclonal
Clone ID	
Concentration	1 mg/mL
Conjugation	Unconjugated
Purification	The antibody was affinity-purified from rabbit anti-serum by affinity-chromatography.
Dilution Range	WB 1:500-1:2000 ELISA 1:40000
Formulation	PBS, 50% Glycerol, 0.5% BSA and 0.02% Sodium Azide.
Isotype	IgG
Storage Instruction	Store at -20°C for up to 1 year from the date of receipt, and avoid repeat freeze-thaw cycles.

TARGET INFORMATION

Gene ID	147381
Gene Symbol	CBLN2
Uniprot ID	CBLN2_HUMAN
Immunogen	The antiserum was produced against synthesized peptide derived from human CBLN2 at amino acid range 161-210
Immunogen Region	130-210 C-Term
Specificity	CBLN2 polyclonal antibody (Cerebellin-2) binds to endogenous Cerebellin-2 at the amino acid region 130-210 C-Term.
Immunogen Sequence	



Western blot analysis of lysates from COS cells, using CBLN2 Antibody. The lane on the right is blocked with the synthesized peptide.



Western blot analysis of various cells using Cerebellin 2 Polyclonal Antibody

This product is suitable for in-vitro studies under the RESEARCH USE ONLY [RUO] licence. This product must not be used as for diagnostic or other medical purposes.
St John's Laboratory Ltd, Knowledge Dock Business Centre, University Way, London, E16 2RD | Tel: 0208 223 3081