

Anti-CEP97 antibody (550-630 Internal) (STJ92232)

STJ92232

GENERAL INFORMATION

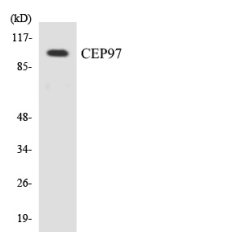
Product Type	Primary antibodies
Short Description	Rabbit polyclonal antibody anti-Centrosomal Protein Of 97 Kda (550-630 Internal) is suitable for use in Western Blot, Immunohistochemistry, Immunofluorescence and ELISA research applications.
Applications	WB, IHC-P, IF-P, ELISA
Host/Source	Rabbit
Reactivity	Human, Mouse

PRODUCT PROPERTIES

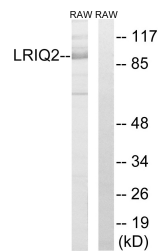
Clonality	Polyclonal
Clone ID	
Concentration	1 mg/mL
Conjugation	Unconjugated
Purification	The antibody was affinity-purified from rabbit anti-serum by affinity-chromatography.
Dilution Range	WB 1:500-1:2000 IHC 1:100-1:300 ELISA 1:20000
Formulation	PBS, 50% Glycerol, 0.5% BSA and 0.02% Sodium Azide.
Isotype	IgG
Storage Instruction	Store at -20°C for up to 1 year from the date of receipt, and avoid repeat freeze-thaw cycles.

TARGET INFORMATION

Gene ID	79598
Gene Symbol	CEP97
Uniprot ID	CEP97_HUMAN
Immunogen	The antiserum was produced against synthesized peptide derived from human CEP97 at amino acid range 581-630
Immunogen Region	550-630 Internal
Specificity	CEP97 polyclonal antibody (Centrosomal Protein Of 97 Kda) binds to endogenous Centrosomal Protein Of 97 Kda at the amino acid region 550-630 Internal.
Immunogen Sequence	



Western blot analysis of the lysates from COLO205 cells using CEP97 antibody.



Western blot analysis of lysates from RAW264.7 cells, using CEP97 Antibody. The lane on the right is blocked with the synthesized peptide.