

Anti-CEP78 antibody (270-350 Internal) (STJ92231)

STJ92231

GENERAL INFORMATION

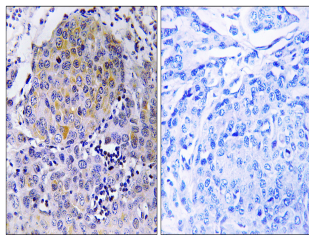
Product Type	Primary antibodies
Short Description	Rabbit polyclonal antibody anti-Centrosomal Protein Of 78 Kda (270-350 Internal) is suitable for use in Western Blot, Immunohistochemistry, Immunofluorescence and ELISA research applications.
Applications	WB, IHC-P, IF-P, ELISA
Host/Source	Rabbit
Reactivity	Human, Mouse

PRODUCT PROPERTIES

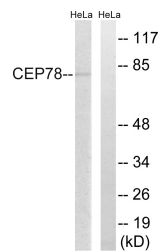
Clonality	Polyclonal
Clone ID	
Concentration	1 mg/mL
Conjugation	Unconjugated
Purification	The antibody was affinity-purified from rabbit anti-serum by affinity-chromatography.
Dilution Range	WB 1:500-1:2000 IHC 1:100-1:300 ELISA 1:20000
Formulation	PBS, 50% Glycerol, 0.5% BSA and 0.02% Sodium Azide.
Isotype	IgG
Storage Instruction	Store at -20°C for up to 1 year from the date of receipt, and avoid repeat freeze-thaw cycles.

TARGET INFORMATION

Gene ID	84131
Gene Symbol	CEP78
Uniprot ID	CEP78_HUMAN
Immunogen	The antiserum was produced against synthesized peptide derived from human CEP78 at amino acid range 301-350
Immunogen Region	270-350 Internal
Specificity	CEP78 polyclonal antibody (Centrosomal Protein Of 78 Kda) binds to endogenous Centrosomal Protein Of 78 Kda at the amino acid region 270-350 Internal.
Immunogen Sequence	



Immunohistochemistry analysis of paraffin-embedded human breast carcinoma tissue, using CEP78 Antibody. The picture on the right is blocked with the synthesized peptide.



Western blot analysis of lysates from HeLa cells, using CEP78 Antibody. The lane on the right is blocked with the synthesized peptide.



Western blot analysis of various cells using CEP78 Polyclonal Antibody