

Anti-CEP76 antibody (220-300 Internal) (STJ92230)

STJ92230

GENERAL INFORMATION

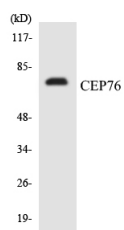
Product Type	Primary antibodies
Short Description	Rabbit polyclonal antibody anti-Centrosomal Protein Of 76 Kda (220-300 Internal) is suitable for use in Western Blot, Immunohistochemistry, Immunofluorescence and ELISA research applications.
Applications	WB, IHC-P, IF-P, ELISA
Host/Source	Rabbit
Reactivity	Human, Mouse

PRODUCT PROPERTIES

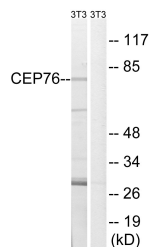
Clonality	Polyclonal
Clone ID	
Concentration	1 mg/mL
Conjugation	Unconjugated
Purification	The antibody was affinity-purified from rabbit anti-serum by affinity-chromatography.
Dilution Range	WB 1:500-1:2000 IHC 1:100-1:300 ELISA 1:10000
Formulation	PBS, 50% Glycerol, 0.5% BSA and 0.02% Sodium Azide.
Isotype	IgG
Storage Instruction	Store at -20°C for up to 1 year from the date of receipt, and avoid repeat freeze-thaw cycles.

TARGET INFORMATION

Gene ID	79959
Gene Symbol	CEP76
Uniprot ID	CEP76_HUMAN
Immunogen	The antiserum was produced against synthesized peptide derived from human CEP76 at amino acid range 251-300
Immunogen Region	220-300 Internal
Specificity	CEP76 polyclonal antibody (Centrosomal Protein Of 76 Kda) binds to endogenous Centrosomal Protein Of 76 Kda at the amino acid region 220-300 Internal.
Immunogen Sequence	



Western blot analysis of the lysates from HT-29 cells using CEP76 antibody.



Western blot analysis of lysates from NIH/3T3 cells, using CEP76 Antibody. The lane on the right is blocked with the synthesized peptide.

This product is suitable for in-vitro studies under the RESEARCH USE ONLY [RUO] licence. This product must not be used as for diagnostic or other medical purposes.
St John's Laboratory Ltd, Knowledge Dock Business Centre, University Way, London, E16 2RD | Tel: 0208 223 3081