

## Anti-CEP350 antibody (640-720 Internal) (STJ92225)

STJ92225

### GENERAL INFORMATION

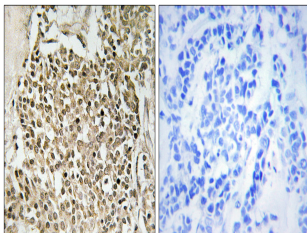
<b>Product Type</b>	Primary antibodies
<b>Short Description</b>	Rabbit polyclonal antibody anti-Centrosome-Associated Protein 350 (640-720 Internal) is suitable for use in Immunohistochemistry, Immunofluorescence and ELISA research applications.
<b>Applications</b>	IHC-P, IF-P, ELISA
<b>Host/Source</b>	Rabbit
<b>Reactivity</b>	Human, Rat, Mouse

### PRODUCT PROPERTIES

<b>Clonality</b>	Polyclonal
<b>Clone ID</b>	
<b>Concentration</b>	1 mg/mL
<b>Conjugation</b>	Unconjugated
<b>Purification</b>	The antibody was affinity-purified from rabbit anti-serum by affinity-chromatography.
<b>Dilution Range</b>	IHC 1:100-1:300 ELISA 1:40000
<b>Formulation</b>	PBS, 50% Glycerol, 0.5% BSA and 0.02% Sodium Azide.
<b>Isotype</b>	IgG
<b>Storage Instruction</b>	Store at -20°C for up to 1 year from the date of receipt, and avoid repeat freeze-thaw cycles.

### TARGET INFORMATION

<b>Gene ID</b>	<a href="#">9857</a>
<b>Gene Symbol</b>	<a href="#">CEP350</a>
<b>Uniprot ID</b>	<a href="#">CE350_HUMAN</a>
<b>Immunogen</b>	The antiserum was produced against synthesized peptide derived from human CEP35 at amino acid range 671-720
<b>Immunogen Region</b>	640-720 Internal
<b>Specificity</b>	CEP350 polyclonal antibody (Centrosome-Associated Protein 350) binds to endogenous Centrosome-Associated Protein 350 at the amino acid region 640-720 Internal.
<b>Immunogen Sequence</b>	



Immunohistochemistry analysis of paraffin-embedded human breast carcinoma, using CEP350 Antibody. The picture on the right is blocked with the synthesized peptide.