

Anti-CEP290 antibody (740-820 Internal) (STJ92224)

STJ92224

GENERAL INFORMATION

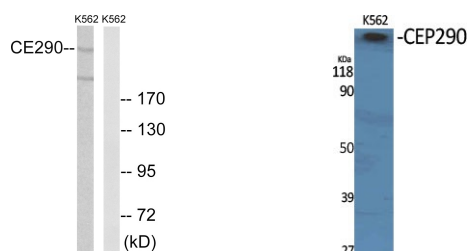
Product Type	Primary antibodies
Short Description	Rabbit polyclonal antibody anti-Centrosomal Protein Of 290 Kda (740-820 Internal) is suitable for use in Western Blot and ELISA research applications.
Applications	WB, ELISA
Host/Source	Rabbit
Reactivity	Human, Mouse

PRODUCT PROPERTIES

Clonality	Polyclonal
Clone ID	
Concentration	1 mg/mL
Conjugation	Unconjugated
Purification	The antibody was affinity-purified from rabbit anti-serum by affinity-chromatography.
Dilution Range	WB 1:500-1:2000 ELISA 1:20000
Formulation	PBS, 50% Glycerol, 0.5% BSA and 0.02% Sodium Azide.
Isotype	IgG
Storage	Store at -20°C for up to 1 year from the date of receipt, and avoid repeat freeze-thaw cycles.
Instruction	

TARGET INFORMATION

Gene ID	80184
Gene Symbol	CEP290
Uniprot ID	CE290_HUMAN
Immunogen	The antiserum was produced against synthesized peptide derived from human CEP290 at amino acid range 771-820
Immunogen Region	740-820 Internal
Specificity	CEP290 polyclonal antibody (Centrosomal Protein Of 290 Kda) binds to endogenous Centrosomal Protein Of 290 Kda at the amino acid region 740-820 Internal.
Immunogen Sequence	



Western blot analysis of lysates from K562 cells, using CEP290 Antibody. The lane on the right is blocked with the synthesized peptide.

Western blot analysis of various cells using CEP290 Polyclonal Antibody

This product is suitable for in-vitro studies under the RESEARCH USE ONLY [RUO] licence. This product must not be used as for diagnostic or other medical purposes.
St John's Laboratory Ltd, Knowledge Dock Business Centre, University Way, London, E16 2RD | Tel: 0208 223 3081