

Anti-CENPA antibody (30-110 N-Term) (STJ92217)

STJ92217

GENERAL INFORMATION

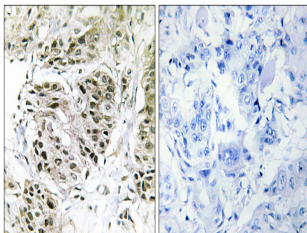
Product Type	Primary antibodies
Short Description	Rabbit polyclonal antibody anti-Histone H3-Like Centromeric Protein A (30-110 N-Term) is suitable for use in Immunohistochemistry, Immunofluorescence and ELISA research applications.
Applications	IHC-P, IF-P, ELISA
Host/Source	Rabbit
Reactivity	Human, Rat, Mouse

PRODUCT PROPERTIES

Clonality	Polyclonal
Clone ID	
Concentration	1 mg/mL
Conjugation	Unconjugated
Purification	The antibody was affinity-purified from rabbit anti-serum by affinity-chromatography.
Dilution Range	IHC 1:100-1:300 ELISA 1:5000
Formulation	PBS, 50% Glycerol, 0.5% BSA and 0.02% Sodium Azide.
Isotype	IgG
Storage Instruction	Store at -20°C for up to 1 year from the date of receipt, and avoid repeat freeze-thaw cycles.

TARGET INFORMATION

Gene ID	1058
Gene Symbol	CENPA
Uniprot ID	CENPA_HUMAN
Immunogen	The antiserum was produced against synthesized peptide derived from human CENPA at amino acid range 11-60
Immunogen Region	30-110 N-Term
Specificity	CENPA polyclonal antibody (Histone H3-Like Centromeric Protein A) binds to endogenous Histone H3-Like Centromeric Protein A at the amino acid region 30-110 N-Term.
Immunogen Sequence	



Immunohistochemistry analysis of paraffin-embedded human breast carcinoma, using CENPA Antibody. The picture on the right is blocked with the synthesized peptide.