

Anti-CEACAM21 antibody (140-220 Internal) (STJ92214)

STJ92214

GENERAL INFORMATION

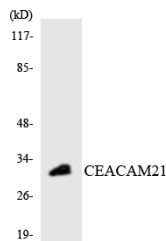
Product Type	Primary antibodies
Short Description	Rabbit polyclonal antibody anti-Carcinoembryonic antigen-Related Cell Adhesion Molecule 21 (140-220 Internal) is suitable for use in Western Blot and ELISA research applications.
Applications	WB, ELISA
Host/Source	Rabbit
Reactivity	Human, Rat, Mouse

PRODUCT PROPERTIES

Clonality	Polyclonal
Clone ID	
Concentration	1 mg/mL
Conjugation	Unconjugated
Purification	The antibody was affinity-purified from rabbit anti-serum by affinity-chromatography.
Dilution	WB 1:500-1:2000
Range	ELISA 1:10000
Formulation	PBS, 50% Glycerol, 0.5% BSA and 0.02% Sodium Azide.
Isotype	IgG
Storage	Store at -20°C for up to 1 year from the date of receipt, and avoid repeat freeze-thaw cycles.
Instruction	

TARGET INFORMATION

Gene ID	90273
Gene Symbol	CEACAM21
Uniprot ID	CEA21_HUMAN
Immunogen	The antiserum was produced against synthesized peptide derived from human CEACAM21 at amino acid range 171-220
Immunogen Region	140-220 Internal
Specificity	CEACAM21 polyclonal antibody (Carcinoembryonic Antigen-Related Cell Adhesion Molecule 21) binds to endogenous Carcinoembryonic Antigen-Related Cell Adhesion Molecule 21 at the amino acid region 140-220 Internal.
Immunogen Sequence	



Western blot analysis of the lysates from HT-29 cells using CEACAM21 antibody.

This product is suitable for in-vitro studies under the RESEARCH USE ONLY [RUO] licence. This product must not be used as for diagnostic or other medical purposes.
 St John's Laboratory Ltd, Knowledge Dock Business Centre, University Way, London, E16 2RD | Tel: 0208 223 3081