

Anti-CUX1 antibody (10-90 N-Term) (STJ92210)

STJ92210

GENERAL INFORMATION

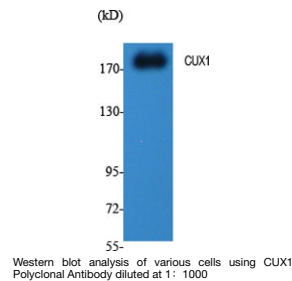
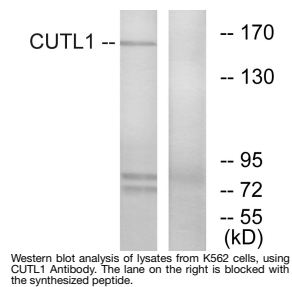
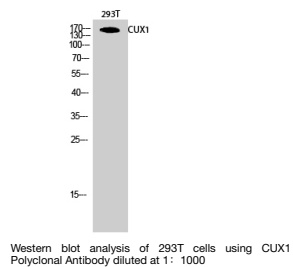
Product Type	Primary antibodies
Short Description	Rabbit polyclonal antibody anti-Homeobox Protein Cut-Like 1/Protein CASP and Homeobox Protein Cut-Like 1/Protein CASP (10-90 N-Term) is suitable for use in Western Blot, Immunohistochemistry, Immunofluorescence, Immunocytochemistry and ELISA research
Applications	WB, IHC-P, IF, ICC, ELISA
Host/Source	Rabbit
Reactivity	Human, Mouse

PRODUCT PROPERTIES

Clonality	Polyclonal
Clone ID	
Concentration	1 mg/mL
Conjugation	Unconjugated
Purification	The antibody was affinity-purified from rabbit anti-serum by affinity-chromatography.
Dilution Range	WB 1:500-1:2000 IHC 1:100-1:300 IF 1:200-1:1000 ELISA 1:40000
Formulation	PBS, 50% Glycerol, 0.5% BSA and 0.02% Sodium Azide.
Isotype	IgG
Storage Instruction	Store at -20°C for up to 1 year from the date of receipt, and avoid repeat freeze-thaw cycles.

TARGET INFORMATION

Gene ID	1523 1523
Gene Symbol	CUX1 CUX1
Uniprot ID	CUX1_HUMAN CASP_HUMAN
Immunogen	The antiserum was produced against synthesized peptide derived from human CUTL1 at amino acid range 10-59
Immunogen Region	10-90 N-Term
Specificity	CUX1 polyclonal antibody (Homeobox Protein Cut-Like 1/Protein CASP and Homeobox Protein Cut-Like 1/Protein CASP) binds to endogenous Homeobox Protein Cut-Like 1/Protein CASP and Homeobox Protein Cut-Like 1/Protein CASP at the amino acid region 10-90
Immunogen Sequence	



This product is suitable for in-vitro studies under the RESEARCH USE ONLY [RUO] licence. This product must not be used as for diagnostic or other medical purposes.
St John's Laboratory Ltd, Knowledge Dock Business Centre, University Way, London, E16 2RD | Tel: 0208 223 3081