

## Anti-CDON antibody (480-560 Internal) (STJ92209)

STJ92209

### GENERAL INFORMATION

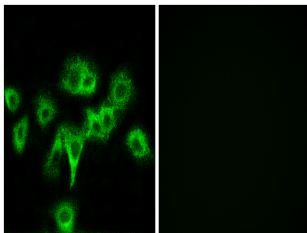
<b>Product Type</b>	Primary antibodies
<b>Short Description</b>	Rabbit polyclonal antibody anti-Cell Adhesion Molecule-Related/Down-Regulated By Oncogenes (480-560 Internal) is suitable for use in Immunofluorescence, Immunocytochemistry and ELISA research applications.
<b>Applications</b>	IF, ICC, ELISA
<b>Host/Source</b>	Rabbit
<b>Reactivity</b>	Human, Rat, Mouse

### PRODUCT PROPERTIES

<b>Clonality</b>	Polyclonal
<b>Clone ID</b>	
<b>Concentration</b>	1 mg/mL
<b>Conjugation</b>	Unconjugated
<b>Purification</b>	The antibody was affinity-purified from rabbit anti-serum by affinity-chromatography.
<b>Dilution</b>	IF 1:200-1:1000
<b>Range</b>	ELISA 1:10000
<b>Formulation</b>	PBS, 50% Glycerol, 0.5% BSA and 0.02% Sodium Azide.
<b>Isotype</b>	IgG
<b>Storage</b>	Store at -20°C for up to 1 year from the date of receipt, and avoid repeat freeze-thaw cycles.
<b>Instruction</b>	

### TARGET INFORMATION

<b>Gene ID</b>	<a href="#">50937</a>
<b>Gene Symbol</b>	<a href="#">CDON</a>
<b>Uniprot ID</b>	<a href="#">CDON_HUMAN</a>
<b>Immunogen</b>	The antiserum was produced against synthesized peptide derived from human CDON at amino acid range 511-560
<b>Immunogen Region</b>	480-560 Internal
<b>Specificity</b>	CDON polyclonal antibody (Cell Adhesion Molecule-Related/Down-Regulated By Oncogenes) binds to endogenous Cell Adhesion Molecule-Related/Down-Regulated By Oncogenes at the amino acid region 480-560 Internal.
<b>Immunogen Sequence</b>	



Immunofluorescence analysis of HeLa cells, using CDON Antibody. The picture on the right is blocked with the synthesized peptide.