

Anti-CDKN3 antibody (1-80 Internal) (STJ92208)

STJ92208

GENERAL INFORMATION

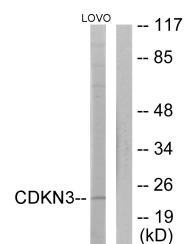
Product Type	Primary antibodies
Short Description	Rabbit polyclonal antibody anti-Cyclin-Dependent Kinase Inhibitor 3 (1-80 Internal) is suitable for use in Western Blot, Immunohistochemistry, Immunofluorescence and ELISA research applications.
Applications	WB, IHC-P, IF-P, ELISA
Host/Source	Rabbit
Reactivity	Human, Mouse

PRODUCT PROPERTIES

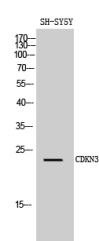
Clonality	Polyclonal
Clone ID	
Concentration	1 mg/mL
Conjugation	Unconjugated
Purification	The antibody was affinity-purified from rabbit anti-serum by affinity-chromatography.
Dilution	WB 1:500-1:2000
Range	IHC 1:100-1:300 ELISA 1:20000
Formulation	PBS, 50% Glycerol, 0.5% BSA and 0.02% Sodium Azide.
Isotype	IgG
Storage Instruction	Store at -20°C for up to 1 year from the date of receipt, and avoid repeat freeze-thaw cycles.

TARGET INFORMATION

Gene ID	1033
Gene Symbol	CDKN3
Uniprot ID	CDKN3_HUMAN
Immunogen	The antiserum was produced against synthesized peptide derived from human CDKN3 at amino acid range 31-80
Immunogen Region	1-80 Internal
Specificity	CDKN3 polyclonal antibody (Cyclin-Dependent Kinase Inhibitor 3) binds to endogenous Cyclin-Dependent Kinase Inhibitor 3 at the amino acid region 1-80 Internal.
Immunogen Sequence	



Western blot analysis of lysates from LOVO cells, using CDKN3 Antibody. The lane on the right is blocked with the synthesized peptide.



Western blot analysis of SH-SY5Y cells using CDKN3 Polyclonal Antibody diluted at 1: 1000

This product is suitable for in-vitro studies under the RESEARCH USE ONLY [RUO] licence. This product must not be used as for diagnostic or other medical purposes.
St John's Laboratory Ltd, Knowledge Dock Business Centre, University Way, London, E16 2RD | Tel: 0208 223 3081