

Anti-CDK7 antibody (260-340 C-Term) (STJ92203)

STJ92203

GENERAL INFORMATION

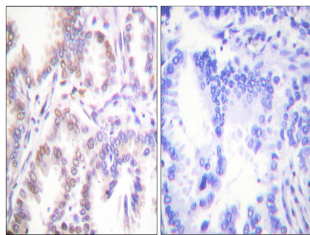
Product Type	Primary antibodies
Short Description	Rabbit polyclonal antibody anti-Cyclin-Dependent Kinase 7 (260-340 C-Term) is suitable for use in Western Blot, Immunohistochemistry, Immunofluorescence and ELISA research applications.
Applications	WB, IHC-P, IF-P, ELISA
Host/Source	Rabbit
Reactivity	Human, Mouse

PRODUCT PROPERTIES

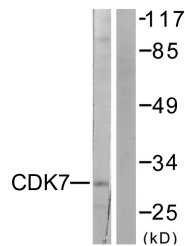
Clonality	Polyclonal
Clone ID	
Concentration	1 mg/mL
Conjugation	Unconjugated
Purification	The antibody was affinity-purified from rabbit anti-serum by affinity-chromatography.
Dilution Range	WB 1:500-1:2000 IHC 1:100-1:300 ELISA 1:20000
Formulation	PBS, 50% Glycerol, 0.5% BSA and 0.02% Sodium Azide.
Isotype	IgG
Storage Instruction	Store at -20°C for up to 1 year from the date of receipt, and avoid repeat freeze-thaw cycles.

TARGET INFORMATION

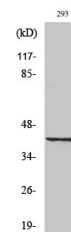
Gene ID	1022
Gene Symbol	CDK7
Uniprot ID	CDK7_HUMAN
Immunogen	The antiserum was produced against synthesized peptide derived from human CDK7 at amino acid range 291-340
Immunogen Region	260-340 C-Term
Specificity	CDK7 polyclonal antibody (Cyclin-Dependent Kinase 7) binds to endogenous Cyclin-Dependent Kinase 7 at the amino acid region 260-340 C-Term.
Immunogen Sequence	



Immunohistochemistry analysis of paraffin-embedded human lung carcinoma tissue, using CDK7 Antibody. The picture on the right is blocked with the synthesized peptide.



Western blot analysis of lysates from 293 cells, using CDK7 Antibody. The lane on the right is blocked with the synthesized peptide.



Western blot analysis of various cells using Cdk7 Polyclonal Antibody