

Anti-CDK5 antibody (1-80) (STJ92200)

STJ92200

GENERAL INFORMATION

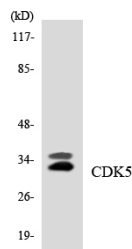
Product Type	Primary antibodies
Short Description	Rabbit polyclonal antibody anti-Cyclin-Dependent-Like Kinase 5 (1-80) is suitable for use in Western Blot, Immunohistochemistry, Immunofluorescence and ELISA research applications.
Applications	WB, IHC-P, IF-P, ELISA
Host/Source	Rabbit
Reactivity	Human, Mouse, Rat

PRODUCT PROPERTIES

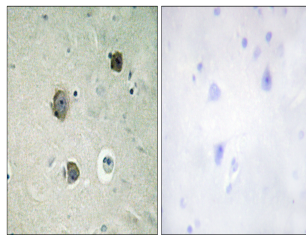
Clonality	Polyclonal
Clone ID	
Concentration	1 mg/mL
Conjugation	Unconjugated
Purification	The antibody was affinity-purified from rabbit anti-serum by affinity-chromatography.
Dilution Range	WB 1:500-1:2000 IHC 1:100-1:300 ELISA 1:5000
Formulation	PBS, 50% Glycerol, 0.5% BSA and 0.02% Sodium Azide.
Isotype	IgG
Storage Instruction	Store at -20°C for up to 1 year from the date of receipt, and avoid repeat freeze-thaw cycles.

TARGET INFORMATION

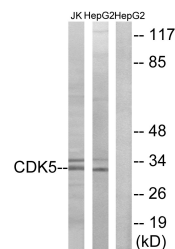
Gene ID	1020
Gene Symbol	CDK5
Uniprot ID	CDK5_HUMAN
Immunogen	The antiserum was produced against synthesized peptide derived from human CDK5 at amino acid range 1-50
Region	1-80
Specificity	CDK5 polyclonal antibody (Cyclin-Dependent-Like Kinase 5) binds to endogenous Cyclin-Dependent-Like Kinase 5 at the amino acid region 1-80.
Immunogen Sequence	



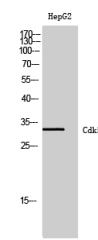
Western blot analysis of the lysates from HUVEC cells using CDK5 antibody.



Immunohistochemistry analysis of paraffin-embedded human brain tissue, using CDK5 Antibody. The picture on the right is blocked with the synthesized peptide.



Western blot analysis of lysates from HepG2 and Jurkat cells, using CDK5 Antibody. The lane on the right is blocked with the synthesized peptide.



Western blot analysis of HepG2 cells using Cdk5 Polyclonal Antibody diluted at 1: 500

This product is suitable for in-vitro studies under the RESEARCH USE ONLY [RUO] licence. This product must not be used as for diagnostic or other medical purposes.
St John's Laboratory Ltd, Knowledge Dock Business Centre, University Way, London, E16 2RD | Tel: 0208 223 3081