

Anti-Cdk11A/B antibody (190-270 Internal) (STJ92196)

STJ92196

GENERAL INFORMATION

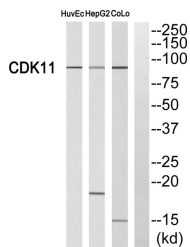
Product Type	Primary antibodies
Short Description	Rabbit polyclonal antibody anti-Cyclin-dependent kinase 11A and Cyclin-dependent kinase 11B (190-270 Internal) is suitable for use in Western Blot and ELISA research applications.
Applications	WB, ELISA
Host/Source	Rabbit
Reactivity	Human, Rat, Mouse

PRODUCT PROPERTIES

Clonality	Polyclonal
Clone ID	
Concentration	1 mg/mL
Conjugation	Unconjugated
Purification	The antibody was affinity-purified from rabbit anti-serum by affinity-chromatography.
Dilution	WB 1:500-1:2000
Range	ELISA 1:10000
Formulation	PBS, 50% Glycerol, 0.5% BSA and 0.02% Sodium Azide.
Isotype	IgG
Storage	Store at -20°C for up to 1 year from the date of receipt, and avoid repeat freeze-thaw cycles.
Instruction	

TARGET INFORMATION

Gene ID	728642
	984
Gene Symbol	CDK11A
	CDK11B
Uniprot ID	CD11A_HUMAN
	CD11B_HUMAN
Immunogen	Synthesized peptide derived from Cdk11A/B. at amino acid range: 190-270
Immunogen Region	190-270 Internal
Specificity	Cdk11A/B polyclonal antibody (Cyclin-dependent kinase 11A and Cyclin-dependent kinase 11B) binds to endogenous Cyclin-dependent kinase 11A and Cyclin-dependent kinase 11B at the amino acid region 190-270 Internal.
Immunogen Sequence	



Western blot analysis of CDK11 Antibody. The lane on the right is blocked with the CDK11 peptide.

This product is suitable for in-vitro studies under the RESEARCH USE ONLY [RUO] licence. This product must not be used as for diagnostic or other medical purposes.
 St John's Laboratory Ltd, Knowledge Dock Business Centre, University Way, London, E16 2RD | Tel: 0208 223 3081