

Anti-CDK10 antibody (30-110 Internal) (STJ92195)

STJ92195

GENERAL INFORMATION

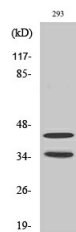
Product Type	Primary antibodies
Short Description	Rabbit polyclonal antibody anti-Cyclin-Dependent Kinase 10 (30-110 Internal) is suitable for use in Western Blot, Immunohistochemistry, Immunofluorescence and ELISA research applications.
Applications	WB, IHC-P, IF-P, ELISA
Host/Source	Rabbit
Reactivity	Human, Mouse, Rat

PRODUCT PROPERTIES

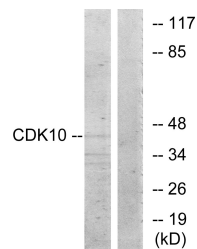
Clonality	Polyclonal
Clone ID	
Concentration	1 mg/mL
Conjugation	Unconjugated
Purification	The antibody was affinity-purified from rabbit anti-serum by affinity-chromatography.
Dilution Range	WB 1:500-1:2000 IHC 1:100-1:300 ELISA 1:10000
Formulation	PBS, 50% Glycerol, 0.5% BSA and 0.02% Sodium Azide.
Isotype	IgG
Storage Instruction	Store at -20°C for up to 1 year from the date of receipt, and avoid repeat freeze-thaw cycles.

TARGET INFORMATION

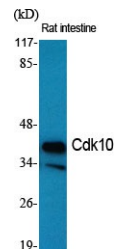
Gene ID	8558
Gene Symbol	CDK10
Uniprot ID	CDK10_HUMAN
Immunogen	The antiserum was produced against synthesized peptide derived from human CDK10 at amino acid range 51-100
Immunogen Region	30-110 Internal
Specificity	CDK10 polyclonal antibody (Cyclin-Dependent Kinase 10) binds to endogenous Cyclin-Dependent Kinase 10 at the amino acid region 30-110 Internal.
Immunogen Sequence	



Western blot analysis of 293 cells using Cdk10 Polyclonal Antibody diluted at 1: 500



Western blot analysis of lysates from 293 cells, using CDK10 Antibody. The lane on the right is blocked with the synthesized peptide.



Western blot analysis of various cells using Cdk10 Polyclonal Antibody diluted at 1: 500

This product is suitable for in-vitro studies under the RESEARCH USE ONLY [RUO] licence. This product must not be used as for diagnostic or other medical purposes.
St John's Laboratory Ltd, Knowledge Dock Business Centre, University Way, London, E16 2RD | Tel: 0208 223 3081