

## Anti-CDK1 antibody (70-150 Internal) (STJ92194)

STJ92194

### GENERAL INFORMATION

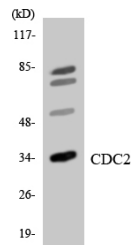
<b>Product Type</b>	Primary antibodies
<b>Short Description</b>	Rabbit polyclonal antibody anti-Cyclin-Dependent Kinase 1 (70-150 Internal) is suitable for use in Western Blot, Immunohistochemistry, Immunofluorescence, Immunocytochemistry and ELISA research applications.
<b>Applications</b>	WB, IHC-P, IF, ICC, ELISA
<b>Host/Source</b>	Rabbit
<b>Reactivity</b>	Human, Mouse, Rat

### PRODUCT PROPERTIES

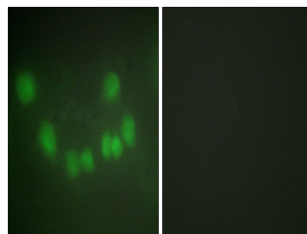
<b>Clonality</b>	Polyclonal
<b>Clone ID</b>	
<b>Concentration</b>	1 mg/mL
<b>Conjugation</b>	Unconjugated
<b>Purification</b>	The antibody was affinity-purified from rabbit anti-serum by affinity-chromatography.
<b>Dilution Range</b>	WB 1:500-1:2000 IHC 1:100-1:300 IF 1:200-1:1000 ELISA 1:20000
<b>Formulation</b>	PBS, 50% Glycerol, 0.5% BSA and 0.02% Sodium Azide.
<b>Isotype</b>	IgG
<b>Storage Instruction</b>	Store at -20°C for up to 1 year from the date of receipt, and avoid repeat freeze-thaw cycles.

### TARGET INFORMATION

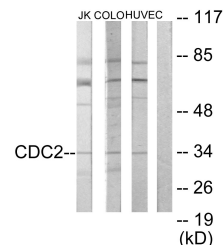
<b>Gene ID</b>	983
<b>Gene Symbol</b>	CDK1
<b>Uniprot ID</b>	CDK1_HUMAN
<b>Immunogen</b>	The antiserum was produced against synthesized peptide derived from human CDC2 at amino acid range 101-150
<b>Region</b>	70-150 Internal
<b>Specificity</b>	CDK1 polyclonal antibody (Cyclin-Dependent Kinase 1) binds to endogenous Cyclin-Dependent Kinase 1 at the amino acid region 70-150 Internal.
<b>Immunogen Sequence</b>	



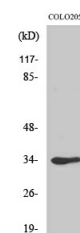
Western blot analysis of the lysates from HeLa cells using CDC2 antibody.



Immunofluorescence analysis of HUVEC cells, using CDC2 Antibody. The picture on the right is blocked with the synthesized peptide.



Western blot analysis of lysates from COLO205, HUVEC, and Jurkat cells, using CDC2 Antibody. The lane on the right is blocked with the synthesized peptide.



Western blot analysis of various cells using Cdk1/Cdc2 Polyclonal Antibody diluted at 1: 2000

This product is suitable for in-vitro studies under the RESEARCH USE ONLY [RUO] licence. This product must not be used as for diagnostic or other medical purposes.  
St John's Laboratory Ltd, Knowledge Dock Business Centre, University Way, London, E16 2RD | Tel: 0208 223 3081