

Anti-Cdk1/2/3 antibody (1-80) (STJ92193)

STJ92193

GENERAL INFORMATION

Product Type	Primary antibodies
Short Description	Rabbit polyclonal antibody anti-Cyclin-dependent kinase 1 and Cyclin-dependent kinase 2 and Cyclin-dependent kinase 3 (1-80) is suitable for use in Western Blot and ELISA research applications.
Applications	WB, ELISA
Host/Source	Rabbit
Reactivity	Human, Mouse, Rat

PRODUCT PROPERTIES

Clonality	Polyclonal
Clone ID	
Concentration	1 mg/mL
Conjugation	Unconjugated
Purification	The antibody was affinity-purified from rabbit anti-serum by affinity-chromatography.
Dilution	WB 1:500-1:2000
Range	ELISA 1:5000
Formulation	PBS, 50% Glycerol, 0.5% BSA and 0.02% Sodium Azide.
Isotype	IgG
Storage	Store at -20°C for up to 1 year from the date of receipt, and avoid repeat freeze-thaw cycles.
Instruction	

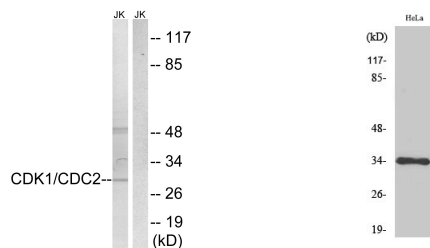
TARGET INFORMATION

Gene ID [1018](#)
[983](#)
[1017](#)
[CDK3](#)
[CDK1](#)
[CDK3_HUMAN](#)
[CDK1_HUMAN](#)
[CDK2_HUMAN](#)

Immunogen The antiserum was produced against synthesized peptide derived from human CDK1/CDC2 at amino acid range 1-50
Immunogen Region 1-80

Specificity Cdk1/2/3 polyclonal antibody (Cyclin-dependent kinase 1 and Cyclin-dependent kinase 2 and Cyclin-dependent kinase 3) binds to endogenous Cyclin-dependent kinase 1 and Cyclin-dependent kinase 2 and Cyclin-dependent kinase 3 at the amino acid region 1-

Immunogen Sequence



Western blot analysis of lysates from HepG2 cells, treated with Forskolin 40nM 30', using CDK1/CDC2 Antibody. The lane on the right is blocked with the synthesized peptide.

Western blot analysis of various cells using Cdk1/2/3 Polyclonal Antibody

This product is suitable for in-vitro studies under the RESEARCH USE ONLY [RUO] licence. This product must not be used as for diagnostic or other medical purposes.
 St John's Laboratory Ltd, Knowledge Dock Business Centre, University Way, London, E16 2RD | Tel: 0208 223 3081