

Anti-CELSR1 antibody (890-970 Internal) (STJ92192)

STJ92192

GENERAL INFORMATION

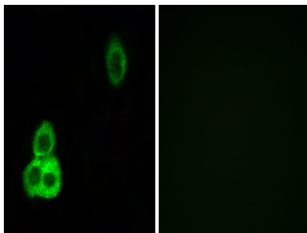
Product Type	Primary antibodies
Short Description	Rabbit polyclonal antibody anti-Cadherin Egf Lag Seven-Pass G-Type Receptor 1 (890-970 Internal) is suitable for use in Immunofluorescence, Immunocytochemistry and ELISA research applications.
Applications	IF, ICC, ELISA
Host/Source	Rabbit
Reactivity	Human, Mouse, Rat

PRODUCT PROPERTIES

Clonality	Polyclonal
Clone ID	
Concentration	1 mg/mL
Conjugation	Unconjugated
Purification	The antibody was affinity-purified from rabbit anti-serum by affinity-chromatography.
Dilution	IF 1:200-1:1000
Range	ELISA 1:10000
Formulation	PBS, 50% Glycerol, 0.5% BSA and 0.02% Sodium Azide.
Isotype	IgG
Storage	Store at -20°C for up to 1 year from the date of receipt, and avoid repeat freeze-thaw cycles.
Instruction	

TARGET INFORMATION

Gene ID	9620
Gene Symbol	CELSR1
Uniprot ID	CELRL1_HUMAN
Immunogen	The antiserum was produced against synthesized peptide derived from human CELSR1 at amino acid range 921-970
Immunogen Region	890-970 Internal
Specificity	CELSR1 polyclonal antibody (Cadherin Egf Lag Seven-Pass G-Type Receptor 1) binds to endogenous Cadherin Egf Lag Seven-Pass G-Type Receptor 1 at the amino acid region 890-970 Internal.
Immunogen Sequence	



Immunofluorescence analysis of HepG2 cells, using CELSR1 Antibody. The picture on the right is blocked with the synthesized peptide.