

Anti-CELSR2 antibody (2750-2830 C-Term) (STJ92190)

STJ92190

GENERAL INFORMATION

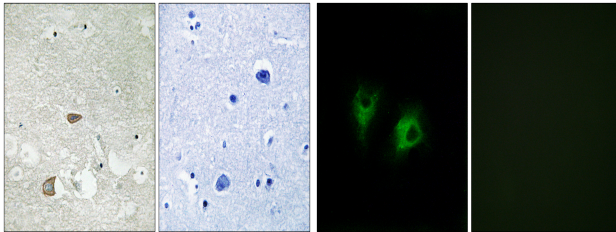
Product Type	Primary antibodies
Short Description	Rabbit polyclonal antibody anti-Cadherin Egf Lag Seven-Pass G-Type Receptor 2 (2750-2830 C-Term) is suitable for use in Immunohistochemistry, Immunofluorescence, Immunocytochemistry and ELISA research applications.
Applications	IHC-P, IF, ICC, ELISA
Host/Source	Rabbit
Reactivity	Human, Mouse, Rat

PRODUCT PROPERTIES

Clonality	Polyclonal
Clone ID	
Concentration	1 mg/mL
Conjugation	Unconjugated
Purification	The antibody was affinity-purified from rabbit anti-serum by affinity-chromatography.
Dilution Range	IHC 1:100-1:300 IF 1:200-1:1000 ELISA 1:5000
Formulation	PBS, 50% Glycerol, 0.5% BSA and 0.02% Sodium Azide.
Isotype	IgG
Storage Instruction	Store at -20°C for up to 1 year from the date of receipt, and avoid repeat freeze-thaw cycles.

TARGET INFORMATION

Gene ID	1952
Gene Symbol	CELSR2
Uniprot ID	CELR2_HUMAN
Immunogen Region	The antiserum was produced against synthesized peptide derived from human CELSR2 at amino acid range 2781-2830
Immunogen Region	2750-2830 C-Term
Specificity	CELSR2 polyclonal antibody (Cadherin Egf Lag Seven-Pass G-Type Receptor 2) binds to endogenous Cadherin Egf Lag Seven-Pass G-Type Receptor 2 at the amino acid region 2750-2830 C-Term.
Immunogen Sequence	



Immunohistochemistry analysis of paraffin-embedded human brain tissue, using CELSR2 Antibody. The picture on the right is blocked with the synthesized peptide.

Immunofluorescence analysis of COS7 cells, using CELSR2 Antibody. The picture on the right is blocked with the synthesized peptide.

This product is suitable for in-vitro studies under the RESEARCH USE ONLY [RUO] licence. This product must not be used as for diagnostic or other medical purposes.
St John's Laboratory Ltd, Knowledge Dock Business Centre, University Way, London, E16 2RD | Tel: 0208 223 3081