

## Anti-CDC5L antibody (690-770 C-Term) (STJ92180)

STJ92180

### GENERAL INFORMATION

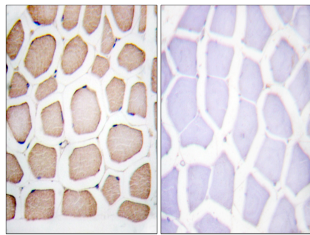
<b>Product Type</b>	Primary antibodies
<b>Short Description</b>	Rabbit polyclonal antibody anti-Cell Division Cycle 5-Like Protein (690-770 C-Term) is suitable for use in Immunohistochemistry, Immunofluorescence and ELISA research applications.
<b>Applications</b>	IHC-P, IF-P, ELISA
<b>Host/Source</b>	Rabbit
<b>Reactivity</b>	Human, Mouse, Rat

### PRODUCT PROPERTIES

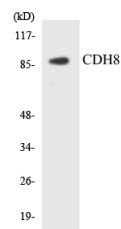
<b>Clonality</b>	Polyclonal
<b>Clone ID</b>	
<b>Concentration</b>	1 mg/mL
<b>Conjugation</b>	Unconjugated
<b>Purification</b>	The antibody was affinity-purified from rabbit anti-serum by affinity-chromatography.
<b>Dilution Range</b>	IHC 1:100-1:300 ELISA 1:5000
<b>Formulation</b>	PBS, 50% Glycerol, 0.5% BSA and 0.02% Sodium Azide.
<b>Isotype</b>	IgG
<b>Storage</b>	Store at -20°C for up to 1 year from the date of receipt, and avoid repeat freeze-thaw cycles.
<b>Instruction</b>	

### TARGET INFORMATION

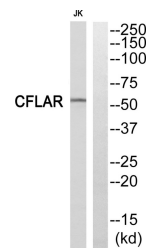
<b>Gene ID</b>	988
<b>Gene Symbol</b>	CDC5L
<b>Uniprot ID</b>	CDC5L_HUMAN
<b>Immunogen</b>	The antiserum was produced against synthesized peptide derived from human CDC5L at amino acid range 721-770
<b>Immunogen Region</b>	690-770 C-Term
<b>Specificity</b>	CDC5L polyclonal antibody (Cell Division Cycle 5-Like Protein) binds to endogenous Cell Division Cycle 5-Like Protein at the amino acid region 690-770 C-Term.
<b>Immunogen Sequence</b>	



Immunohistochemistry analysis of paraffin-embedded human smooth muscle, using CDC5L Antibody. The lane on the right is blocked with the CDC5L peptide.



Western blot analysis of the lysates from HeLa cells using CDH8 antibody.



Western blot analysis of CDC5L Antibody. The lane on the right is blocked with the CDC5L peptide.