

Anti-TMEM30B antibody (60-140 Internal) (STJ92178)

STJ92178

GENERAL INFORMATION

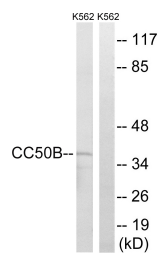
Product Type	Primary antibodies
Short Description	Rabbit polyclonal antibody anti-Cell Cycle Control Protein 50b (60-140 Internal) is suitable for use in Western Blot and ELISA research applications.
Applications	WB, ELISA
Host/Source	Rabbit
Reactivity	Human, Mouse

PRODUCT PROPERTIES

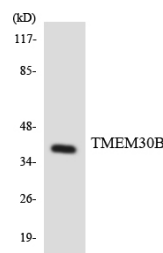
Clonality	Polyclonal
Clone ID	
Concentration	1 mg/mL
Conjugation	Unconjugated
Purification	The antibody was affinity-purified from rabbit anti-serum by affinity-chromatography.
Dilution Range	WB 1:500-1:2000 ELISA 1:40000
Formulation	PBS, 50% Glycerol, 0.5% BSA and 0.02% Sodium Azide.
Isotype	IgG
Storage	Store at -20°C for up to 1 year from the date of receipt, and avoid repeat freeze-thaw cycles.
Instruction	

TARGET INFORMATION

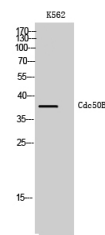
Gene ID	161291
Gene Symbol	TMEM30B
Uniprot ID	CC50B_HUMAN
Immunogen	The antiserum was produced against synthesized peptide derived from human TMEM30B at amino acid range 91-140
Immunogen Region	60-140 Internal
Specificity	TMEM30B polyclonal antibody (Cell Cycle Control Protein 50b) binds to endogenous Cell Cycle Control Protein 50b at the amino acid region 60-140 Internal.
Immunogen Sequence	



Western blot analysis of lysates from K562 cells, using TMEM30B Antibody. The lane on the right is blocked with the synthesized peptide.



Western blot analysis of the lysates from HeLa cells using TMEM30B antibody.



Western blot analysis of K562 cells using Cdc50B Polyclonal Antibody

This product is suitable for in-vitro studies under the RESEARCH USE ONLY [RUO] licence. This product must not be used as for diagnostic or other medical purposes.
St John's Laboratory Ltd, Knowledge Dock Business Centre, University Way, London, E16 2RD | Tel: 0208 223 3081