

Anti-CDC42EP4 antibody (180-260 Internal) (STJ92175)

STJ92175

GENERAL INFORMATION

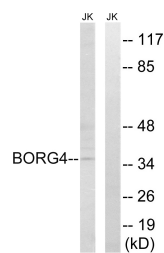
Product Type	Primary antibodies
Short Description	Rabbit polyclonal antibody anti-Cdc42 Effector Protein 4 (180-260 Internal) is suitable for use in Western Blot, Immunohistochemistry, Immunofluorescence and ELISA research applications.
Applications	WB, IHC-P, IF-P, ELISA
Host/Source	Rabbit
Reactivity	Human, Rat, Mouse

PRODUCT PROPERTIES

Clonality	Polyclonal
Clone ID	
Concentration	1 mg/mL
Conjugation	Unconjugated
Purification	The antibody was affinity-purified from rabbit anti-serum by affinity-chromatography.
Dilution Range	WB 1:500-1:2000 IHC 1:100-1:300 ELISA 1:20000
Formulation	PBS, 50% Glycerol, 0.5% BSA and 0.02% Sodium Azide.
Isotype	IgG
Storage Instruction	Store at -20°C for up to 1 year from the date of receipt, and avoid repeat freeze-thaw cycles.

TARGET INFORMATION

Gene ID	23580
Gene Symbol	CDC42EP4
Uniprot ID	BORG4_HUMAN
Immunogen	The antiserum was produced against synthesized peptide derived from human BORG4 at amino acid range 201-250
Immunogen Region	180-260 Internal
Specificity	CDC42EP4 polyclonal antibody (Cdc42 Effector Protein 4) binds to endogenous Cdc42 Effector Protein 4 at the amino acid region 180-260 Internal.
Immunogen Sequence	



Western blot analysis of lysates from Jurkat cells, using BORG4 Antibody. The lane on the right is blocked with the synthesized peptide.