

Anti-CDC37 antibody (1-80) (STJ92170)

STJ92170

GENERAL INFORMATION

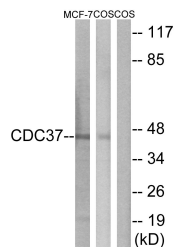
Product Type	Primary antibodies
Short Description	Rabbit polyclonal antibody anti-Hsp90 Co-Chaperone Cdc37 (1-80) is suitable for use in Western Blot, Immunohistochemistry, Immunofluorescence, Immunocytochemistry and ELISA research applications.
Applications	WB, IHC-P, IF, ICC, ELISA
Host/Source	Rabbit
Reactivity	Human, Mouse, Rat, Monkey

PRODUCT PROPERTIES

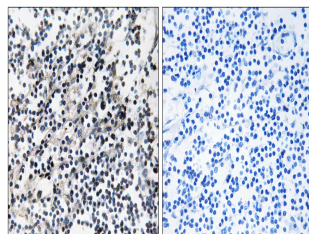
Clonality	Polyclonal
Clone ID	
Concentration	1 mg/mL
Conjugation	Unconjugated
Purification	The antibody was affinity-purified from rabbit anti-serum by affinity-chromatography.
Dilution	WB 1:500-1:2000
Range	IHC 1:100-1:300 IF 1:200-1:1000 ELISA 1:20000
Formulation	PBS, 50% Glycerol, 0.5% BSA and 0.02% Sodium Azide.
Isotype	IgG
Storage Instruction	Store at -20°C for up to 1 year from the date of receipt, and avoid repeat freeze-thaw cycles.

TARGET INFORMATION

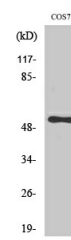
Gene ID	11140
Gene Symbol	CDC37
Uniprot ID	CDC37_HUMAN
Immunogen	The antiserum was produced against synthesized peptide derived from human CDC37 at amino acid range 1-50
Immunogen Region	1-80
Specificity	CDC37 polyclonal antibody (Hsp90 Co-Chaperone Cdc37) binds to endogenous Hsp90 Co-Chaperone Cdc37 at the amino acid region 1-80.
Immunogen Sequence	



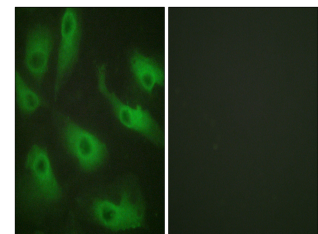
Western blot analysis of lysates from MCF-7 and COS7 cells, using CDC37 Antibody. The lane on the right is blocked with the synthesized peptide.



Immunohistochemistry analysis of paraffin-embedded human placenta tissue, using CDC37 Antibody. The picture on the right is blocked with the synthesized peptide.



Western blot analysis of MCF7 cells using Cdc37 Polyclonal Antibody



Immunofluorescence analysis of HeLa cells, using CDC37 Antibody. The picture on the right is blocked with the synthesized peptide.

This product is suitable for in-vitro studies under the RESEARCH USE ONLY [RUO] licence. This product must not be used as for diagnostic or other medical purposes.
St John's Laboratory Ltd, Knowledge Dock Business Centre, University Way, London, E16 2RD | Tel: 0208 223 3081