

Anti-CDC27 antibody (330-410 Internal) (STJ92167)

STJ92167

GENERAL INFORMATION

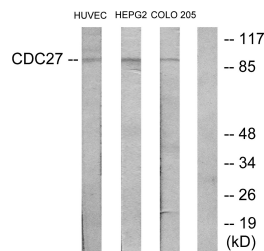
Product Type	Primary antibodies
Short Description	Rabbit polyclonal antibody anti-Cell Division Cycle Protein 27 Homolog (330-410 Internal) is suitable for use in Western Blot, Immunohistochemistry, Immunofluorescence and ELISA research applications.
Applications	WB, IHC-P, IF-P, ELISA
Host/Source	Rabbit
Reactivity	Human, Mouse, Rat

PRODUCT PROPERTIES

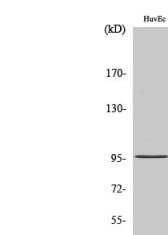
Clonality	Polyclonal
Clone ID	
Concentration	1 mg/mL
Conjugation	Unconjugated
Purification	The antibody was affinity-purified from rabbit anti-serum by affinity-chromatography.
Dilution Range	WB 1:500-1:2000 IHC 1:100-1:300 ELISA 1:5000
Formulation	PBS, 50% Glycerol, 0.5% BSA and 0.02% Sodium Azide.
Isotype	IgG
Storage Instruction	Store at -20°C for up to 1 year from the date of receipt, and avoid repeat freeze-thaw cycles.

TARGET INFORMATION

Gene ID	996
Gene Symbol	CDC27
Uniprot ID	CDC27_HUMAN
Immunogen Region	The antiserum was produced against synthesized peptide derived from human H-NUC at amino acid range 361-410
Immunogen Region	330-410 Internal
Specificity	CDC27 polyclonal antibody (Cell Division Cycle Protein 27 Homolog) binds to endogenous Cell Division Cycle Protein 27 Homolog at the amino acid region 330-410 Internal.
Immunogen Sequence	



Western blot analysis of lysates from HUVEC, HepG2, and COLO205 cells, using H-NUC Antibody. The lane on the right is blocked with the synthesized peptide.



Western blot analysis of various cells using Cdc27 Polyclonal Antibody.

This product is suitable for in-vitro studies under the RESEARCH USE ONLY [RUO] licence. This product must not be used as for diagnostic or other medical purposes.
St John's Laboratory Ltd, Knowledge Dock Business Centre, University Way, London, E16 2RD | Tel: 0208 223 3081