

## Anti-CDC25C antibody (160-240) (STJ92166)

STJ92166

### GENERAL INFORMATION

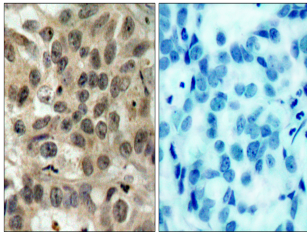
<b>Product Type</b>	Primary antibodies
<b>Short Description</b>	Rabbit polyclonal antibody anti-M-Phase Inducer Phosphatase 3 (160-240) is suitable for use in Western Blot, Immunohistochemistry, Immunofluorescence and ELISA research applications.
<b>Applications</b>	WB, IHC-P, IF-P, ELISA
<b>Host/Source</b>	Rabbit
<b>Reactivity</b>	Human, Rat, Mouse

### PRODUCT PROPERTIES

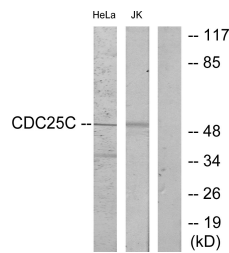
<b>Clonality</b>	Polyclonal
<b>Clone ID</b>	
<b>Concentration</b>	1 mg/mL
<b>Conjugation</b>	Unconjugated
<b>Purification</b>	The antibody was affinity-purified from rabbit anti-serum by affinity-chromatography.
<b>Dilution Range</b>	WB 1:500-1:2000 IHC 1:100-1:300 ELISA 1:40000
<b>Formulation</b>	PBS, 50% Glycerol, 0.5% BSA and 0.02% Sodium Azide.
<b>Isotype</b>	IgG
<b>Storage Instruction</b>	Store at -20°C for up to 1 year from the date of receipt, and avoid repeat freeze-thaw cycles.

### TARGET INFORMATION

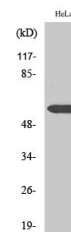
<b>Gene ID</b>	995
<b>Gene Symbol</b>	CDC25C
<b>Uniprot ID</b>	MPIP3_HUMAN
<b>Immunogen</b>	The antiserum was produced against synthesized peptide derived from human CDC25C at amino acid range 183-232
<b>Immunogen Region</b>	160-240
<b>Specificity</b>	CDC25C polyclonal antibody (M-Phase Inducer Phosphatase 3) binds to endogenous M-Phase Inducer Phosphatase 3 at the amino acid region 160-240.
<b>Immunogen Sequence</b>	



Immunohistochemistry analysis of paraffin-embedded human breast carcinoma tissue, using CDC25C Antibody. The picture on the right is blocked with the synthesized peptide.



Western blot analysis of lysates from HeLa and Jurkat cells, using CDC25C Antibody. The lane on the right is blocked with the synthesized peptide.



Western blot analysis of various cells using Cdc25C Polyclonal Antibody