

Anti-CDC25B antibody (260-340) (STJ92164)

STJ92164

GENERAL INFORMATION

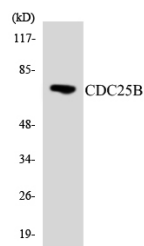
Product Type	Primary antibodies
Short Description	Rabbit polyclonal antibody anti-M-Phase Inducer Phosphatase 2 (260-340) is suitable for use in Western Blot, Immunofluorescence, Immunocytochemistry and ELISA research applications.
Applications	WB, IF, ICC, ELISA
Host/Source	Rabbit
Reactivity	Human, Mouse, Rat

PRODUCT PROPERTIES

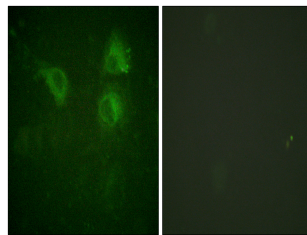
Clonality	Polyclonal
Clone ID	
Concentration	1 mg/mL
Conjugation	Unconjugated
Purification	The antibody was affinity-purified from rabbit anti-serum by affinity-chromatography.
Dilution Range	WB 1:500-1:2000 IF 1:200-1:1000 ELISA 1:20000
Formulation	PBS, 50% Glycerol, 0.5% BSA and 0.02% Sodium Azide.
Isotype	IgG
Storage Instruction	Store at -20°C for up to 1 year from the date of receipt, and avoid repeat freeze-thaw cycles.

TARGET INFORMATION

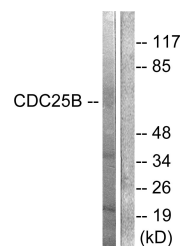
Gene ID	994
Gene Symbol	CDC25B
Uniprot ID	MPIP2_HUMAN
Immunogen	The antiserum was produced against synthesized peptide derived from human CDC25B at amino acid range 289-338
Immunogen Region	260-340
Specificity	CDC25B polyclonal antibody (M-Phase Inducer Phosphatase 2) binds to endogenous M-Phase Inducer Phosphatase 2 at the amino acid region 260-340.
Immunogen Sequence	



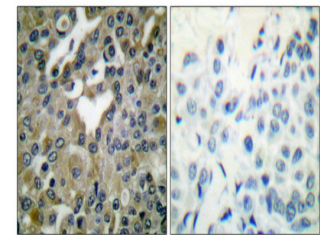
Western blot analysis of the lysates from HeLa cells using CDC25B antibody.



Immunofluorescence analysis of HUVEC cells, using CDC25B Antibody. The picture on the right is blocked with the synthesized peptide.



Western blot analysis of lysates from Raw264.7 cells, treated with Hu 2nM 24h, using CDC25B Antibody. The lane on the right is blocked with the synthesized peptide.



Immunohistochemical analysis of paraffin-embedded Human breast cancer. Antibody was diluted at 1:100 (4°C overnight). High-pressure and temperature Tris-EDTA, pH8.0 was used for antigen retrieval. Negative control (right) obtained from antibody was pre-absorbed by immunogen peptide.

This product is suitable for in-vitro studies under the RESEARCH USE ONLY [RUO] licence. This product must not be used as for diagnostic or other medical purposes.
St John's Laboratory Ltd, Knowledge Dock Business Centre, University Way, London, E16 2RD | Tel: 0208 223 3081