

## Anti-CDC25A antibody (20-100) (STJ92161)

STJ92161

### GENERAL INFORMATION

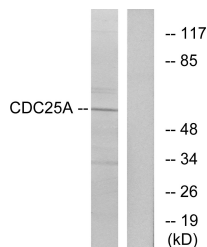
|                          |  |
|--------------------------|--|
| <b>Product Type</b>      | Primary antibodies   |
| <b>Short Description</b> | Rabbit polyclonal antibody anti-M-Phase Inducer Phosphatase 1 (20-100) is suitable for use in Western Blot, Immunohistochemistry, Immunofluorescence, Immunocytochemistry and ELISA research applications. |
| <b>Applications</b>      | WB, IHC-P, IF, ICC, ELISA  |
| <b>Host/Source</b>       | Rabbit   |
| <b>Reactivity</b>        | Human, Mouse, Rat, Monkey  |

### PRODUCT PROPERTIES

|                            |  |
|----------------------------|--|
| <b>Clonality</b>           | Polyclonal   |
| <b>Clone ID</b>            |  |
| <b>Concentration</b>       | 1 mg/mL  |
| <b>Conjugation</b>         | Unconjugated   |
| <b>Purification</b>        | The antibody was affinity-purified from rabbit anti-serum by affinity-chromatography.          |
| <b>Dilution Range</b>      | WB 1:500-1:2000<br>IHC 1:100-1:300<br>IF 1:200-1:1000<br>ELISA 1:10000                         |
| <b>Formulation</b>         | PBS, 50% Glycerol, 0.5% BSA and 0.02% Sodium Azide.  |
| <b>Isotype</b>             | IgG  |
| <b>Storage Instruction</b> | Store at -20°C for up to 1 year from the date of receipt, and avoid repeat freeze-thaw cycles. |

### TARGET INFORMATION

|                           |   |
|---------------------------|---|
| <b>Gene ID</b>            | 993   |
| <b>Gene Symbol</b>        | CDC25A  |
| <b>Uniprot ID</b>         | MPIP1_HUMAN   |
| <b>Immunogen</b>          | The antiserum was produced against synthesized peptide derived from human CDC25A at amino acid range 43-92                                    |
| <b>Immunogen Region</b>   | 20-100  |
| <b>Specificity</b>        | CDC25A polyclonal antibody (M-Phase Inducer Phosphatase 1) binds to endogenous M-Phase Inducer Phosphatase 1 at the amino acid region 20-100. |
| <b>Immunogen Sequence</b> |   |



Western blot analysis of lysates from A2780 cells, treated with UV, using CDC25A Antibody. The lane on the right is blocked with the synthesized peptide.

This product is suitable for in-vitro studies under the RESEARCH USE ONLY [RUO] licence. This product must not be used as for diagnostic or other medical purposes.  
St John's Laboratory Ltd, Knowledge Dock Business Centre, University Way, London, E16 2RD | Tel: 0208 223 3081