

Anti-CDC25A antibody (60-140) (STJ92158)

STJ92158

GENERAL INFORMATION

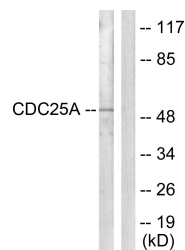
Product Type	Primary antibodies
Short Description	Rabbit polyclonal antibody anti-M-Phase Inducer Phosphatase 1 (60-140) is suitable for use in Western Blot and ELISA research applications.
Applications	WB, ELISA
Host/Source	Rabbit
Reactivity	Human, Mouse, Rat

PRODUCT PROPERTIES

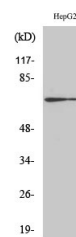
Clonality	Polyclonal
Clone ID	
Concentration	1 mg/mL
Conjugation	Unconjugated
Purification	The antibody was affinity-purified from rabbit anti-serum by affinity-chromatography.
Dilution Range	WB 1:500-1:2000 ELISA 1:5000
Formulation	PBS, 50% Glycerol, 0.5% BSA and 0.02% Sodium Azide.
Isotype	IgG
Storage	Store at -20°C for up to 1 year from the date of receipt, and avoid repeat freeze-thaw cycles.
Instruction	

TARGET INFORMATION

Gene ID	993
Gene Symbol	CDC25A
Uniprot ID	MPIP1_HUMAN
Immunogen	The antiserum was produced against synthesized peptide derived from human CDC25A at amino acid range 90-139
Immunogen Region	60-140
Specificity	CDC25A polyclonal antibody (M-Phase Inducer Phosphatase 1) binds to endogenous M-Phase Inducer Phosphatase 1 at the amino acid region 60-140.
Immunogen Sequence	



Western blot analysis of lysates from HepG2 cells, using CDC25A Antibody. The lane on the right is blocked with the synthesized peptide.



Western blot analysis of various cells using Cdc25A Polyclonal Antibody diluted at 1: 500