

## Anti-CDC20 antibody (50-130 Internal) (STJ92156)

STJ92156

### GENERAL INFORMATION

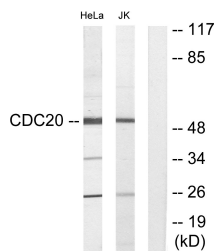
<b>Product Type</b>	Primary antibodies
<b>Short Description</b>	Rabbit polyclonal antibody anti-Cell Division Cycle Protein 20 Homolog (50-130 Internal) is suitable for use in Western Blot, Immunohistochemistry, Immunofluorescence and ELISA research applications.
<b>Applications</b>	WB, IHC-P, IF-P, ELISA
<b>Host/Source</b>	Rabbit
<b>Reactivity</b>	Human, Mouse, Rat

### PRODUCT PROPERTIES

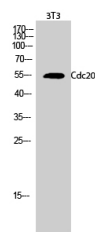
<b>Clonality</b>	Polyclonal
<b>Clone ID</b>	
<b>Concentration</b>	1 mg/mL
<b>Conjugation</b>	Unconjugated
<b>Purification</b>	The antibody was affinity-purified from rabbit anti-serum by affinity-chromatography.
<b>Dilution Range</b>	WB 1:500-1:2000 IHC 1:100-1:300 ELISA 1:20000
<b>Formulation</b>	PBS, 50% Glycerol, 0.5% BSA and 0.02% Sodium Azide.
<b>Isotype</b>	IgG
<b>Storage Instruction</b>	Store at 20°C for up to 1 year from the date of receipt, and avoid repeat freeze-thaw cycles.

### TARGET INFORMATION

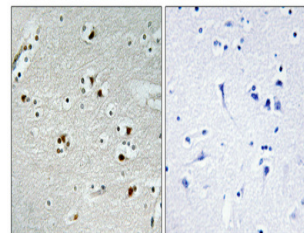
<b>Gene ID</b>	991
<b>Gene Symbol</b>	CDC20
<b>Uniprot ID</b>	CDC20_HUMAN
<b>Immunogen</b>	The antiserum was produced against synthesized peptide derived from human p53CDC at amino acid range 81-130
<b>Immunogen Region</b>	50-130 Internal
<b>Specificity</b>	CDC20 polyclonal antibody (Cell Division Cycle Protein 20 Homolog) binds to endogenous Cell Division Cycle Protein 20 Homolog at the amino acid region 50-130 Internal.
<b>Immunogen Sequence</b>	



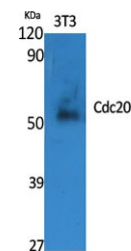
Western blot analysis of lysates from Jurkat and HeLa cells, using p53CDC Antibody. The lane on the right is blocked with the synthesized peptide.



Western blot analysis of 3T3 cells using Cdc20 Polyclonal Antibody diluted at 1: 2000



Immunohistochemical analysis of paraffin-embedded Human brain. Antibody was diluted at 1:100 (4°C overnight). High-pressure and temperature Tris-EDTA, pH8.0 was used for antigen retrieval. Negative control (right) obtained from antibody was pre-absorbed by immunogen peptide.



Western blot analysis of various cells using Cdc20 Polyclonal Antibody diluted at 1: 2000

This product is suitable for in-vitro studies under the RESEARCH USE ONLY [RUO] licence. This product must not be used as for diagnostic or other medical purposes.  
St John's Laboratory Ltd, Knowledge Dock Business Centre, University Way, London, E16 2RD | Tel: 0208 223 3081