

Anti-CDC16 antibody (500-580) (STJ92153)

STJ92153

GENERAL INFORMATION

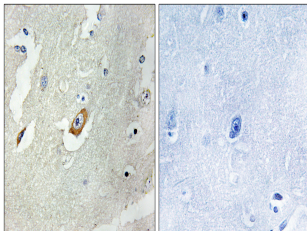
Product Type	Primary antibodies
Short Description	Rabbit polyclonal antibody anti-Cell Division Cycle Protein 16 Homolog (500-580) is suitable for use in Western Blot, Immunohistochemistry, Immunofluorescence, Immunocytochemistry and ELISA research applications.
Applications	WB, IHC-P, IF, ICC, ELISA
Host/Source	Rabbit
Reactivity	Human, Mouse

PRODUCT PROPERTIES

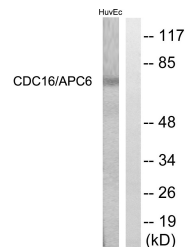
Clonality	Polyclonal
Clone ID	
Concentration	1 mg/mL
Conjugation	Unconjugated
Purification	The antibody was affinity-purified from rabbit anti-serum by affinity-chromatography.
Dilution	WB 1:500-1:2000
Range	IHC 1:100-1:300 IF 1:200-1:1000 ELISA 1:5000
Formulation	PBS, 50% Glycerol, 0.5% BSA and 0.02% Sodium Azide.
Isotype	IgG
Storage Instruction	Store at -20°C for up to 1 year from the date of receipt, and avoid repeat freeze-thaw cycles.

TARGET INFORMATION

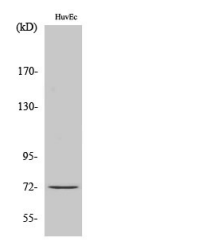
Gene ID	8881
Gene Symbol	CDC16
Uniprot ID	CDC16_HUMAN
Immunogen	The antiserum was produced against synthesized peptide derived from human CDC16/APC6 at amino acid range 526-575
Immunogen Region	500-580
Specificity	CDC16 polyclonal antibody (Cell Division Cycle Protein 16 Homolog) binds to endogenous Cell Division Cycle Protein 16 Homolog at the amino acid region 500-580.
Immunogen Sequence	



Immunohistochemistry analysis of paraffin-embedded human breast carcinoma tissue, using CDC16/APC6 Antibody. The picture on the right is blocked with the synthesized peptide.



Western blot analysis of lysates from HUVEC cells, using CDC16/APC6 Antibody. The lane on the right is blocked with the synthesized peptide.



Western blot analysis of various cells using Cdc16 Polyclonal Antibody

This product is suitable for in-vitro studies under the RESEARCH USE ONLY [RUO] licence. This product must not be used as for diagnostic or other medical purposes.
St John's Laboratory Ltd, Knowledge Dock Business Centre, University Way, London, E16 2RD | Tel: 0208 223 3081