

Anti-C5AR1 antibody (270-350) (STJ92146)

STJ92146

GENERAL INFORMATION

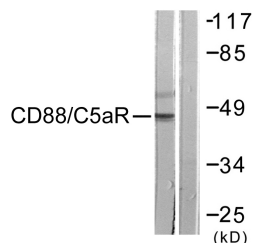
| | |
|--------------------------|--|
| Product Type | Primary antibodies |
| Short Description | Rabbit polyclonal antibody anti-C5a Anaphylatoxin Chemotactic Receptor 1 (270-350) is suitable for use in Western Blot, Immunohistochemistry, Immunofluorescence, Immunocytochemistry and ELISA research applications. |
| Applications | WB, IHC-P, IF, ICC, ELISA |
| Host/Source | Rabbit |
| Reactivity | Human, Rat, Mouse |

PRODUCT PROPERTIES

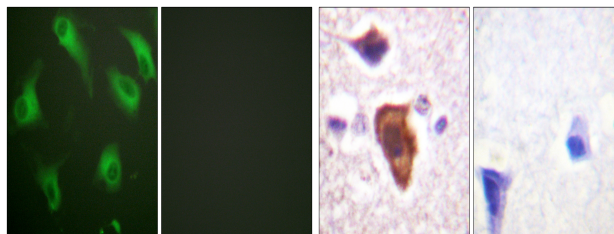
| | |
|----------------------------|--|
| Clonality | Polyclonal |
| Clone ID | |
| Concentration | 1 mg/mL |
| Conjugation | Unconjugated |
| Purification | The antibody was affinity-purified from rabbit anti-serum by affinity-chromatography. |
| Dilution Range | WB 1:500-1:2000 IHC 1:100-1:300 IF 1:200-1:1000 ELISA 1:5000 |
| Formulation | PBS, 50% Glycerol, 0.5% BSA and 0.02% Sodium Azide. |
| Isotype | IgG |
| Storage Instruction | Store at -20°C for up to 1 year from the date of receipt, and avoid repeat freeze-thaw cycles. |

TARGET INFORMATION

| | |
|---------------------------|---|
| Gene ID | 728 |
| Gene Symbol | C5AR1 |
| Uniprot ID | C5AR1_HUMAN |
| Immunogen | The antiserum was produced against synthesized peptide derived from human CD88/C5aR at amino acid range 301-350 |
| Immunogen Region | 270-350 |
| Specificity | C5AR1 polyclonal antibody (C5a Anaphylatoxin Chemotactic Receptor 1) binds to endogenous C5a Anaphylatoxin Chemotactic Receptor 1 at the amino acid region 270-350. |
| Immunogen Sequence | |

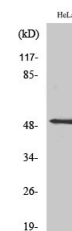


Western blot analysis of lysates from HeLa cells, treated with PMA 125ng/ml 30', using CD88/C5aR Antibody. The lane on the right is blocked with the synthesized peptide.



Immunofluorescence analysis of HeLa cells, using CD88/C5aR Antibody. The picture on the right is blocked with the synthesized peptide.

Immunohistochemistry analysis of paraffin-embedded human brain tissue, using CD88/C5aR Antibody. The picture on the right is blocked with the synthesized peptide.



Western blot analysis of various cells using CD88 Polyclonal Antibody

This product is suitable for in-vitro studies under the RESEARCH USE ONLY [RUO] licence. This product must not be used as for diagnostic or other medical purposes.
St John's Laboratory Ltd, Knowledge Dock Business Centre, University Way, London, E16 2RD | Tel: 0208 223 3081