

Anti-CD69 antibody (70-150 Internal) (STJ92138)

STJ92138

GENERAL INFORMATION

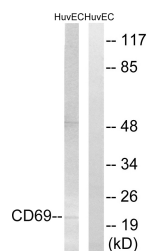
Product Type	Primary antibodies
Short Description	Rabbit polyclonal antibody anti-Early Activation antigen Cd69 (70-150 Internal) is suitable for use in Western Blot and ELISA research applications.
Applications	WB, ELISA
Host/Source	Rabbit
Reactivity	Human, Mouse, Rat

PRODUCT PROPERTIES

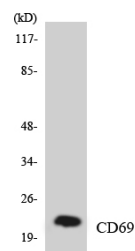
Clonality	Polyclonal
Clone ID	
Concentration	1 mg/mL
Conjugation	Unconjugated
Purification	The antibody was affinity-purified from rabbit anti-serum by affinity-chromatography.
Dilution Range	WB 1:500-1:2000 ELISA 1:40000
Formulation	PBS, 50% Glycerol, 0.5% BSA and 0.02% Sodium Azide.
Isotype	IgG
Storage	Store at -20°C for up to 1 year from the date of receipt, and avoid repeat freeze-thaw cycles.
Instruction	

TARGET INFORMATION

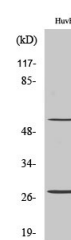
Gene ID	969
Gene Symbol	CD69
Uniprot ID	CD69_HUMAN
Immunogen	The antiserum was produced against synthesized peptide derived from human CD69 at amino acid range 101-150
Immunogen Region	70-150 Internal
Specificity	CD69 polyclonal antibody (Early Activation Antigen Cd69) binds to endogenous Early Activation Antigen Cd69 at the amino acid region 70-150 Internal.
Immunogen Sequence	



Western blot analysis of lysates from HUVEC cells, using CD69 Antibody. The lane on the right is blocked with the synthesized peptide.



Western blot analysis of the lysates from HUVEC cells using CD69 antibody.



Western blot analysis of various cells using CD69 Polyclonal Antibody diluted at 1: 1000