

Anti-CD6 antibody (220-300 Internal) (STJ92136)

STJ92136

GENERAL INFORMATION

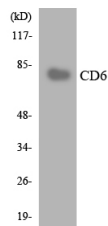
Product Type	Primary antibodies
Short Description	Rabbit polyclonal antibody anti-T-Cell Differentiation antigen Cd6 (220-300 Internal) is suitable for use in Western Blot and ELISA research applications.
Applications	WB, ELISA
Host/Source	Rabbit
Reactivity	Human, Rat, Mouse

PRODUCT PROPERTIES

Clonality	Polyclonal
Clone ID	
Concentration	1 mg/mL
Conjugation	Unconjugated
Purification	The antibody was affinity-purified from rabbit anti-serum by affinity-chromatography.
Dilution Range	WB 1:500-1:2000 ELISA 1:40000
Formulation	PBS, 50% Glycerol, 0.5% BSA and 0.02% Sodium Azide.
Isotype	IgG
Storage Instruction	Store at -20°C for up to 1 year from the date of receipt, and avoid repeat freeze-thaw cycles.

TARGET INFORMATION

Gene ID	923
Gene Symbol	CD6
Uniprot ID	CD6_HUMAN
Immunogen	The antiserum was produced against synthesized peptide derived from human CD6 at amino acid range 250-299
Immunogen Region	220-300 Internal
Specificity	CD6 polyclonal antibody (T-Cell Differentiation Antigen Cd6) binds to endogenous T-Cell Differentiation Antigen Cd6 at the amino acid region 220-300 Internal.
Immunogen Sequence	



Western blot analysis of the lysates from HT-29 cells using CD6 antibody.