

Anti-CD5 antibody (390-470) (STJ92131)

STJ92131

GENERAL INFORMATION

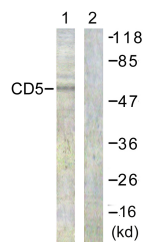
| | |
|--------------------------|--|
| Product Type | Primary antibodies |
| Short Description | Rabbit polyclonal antibody anti-T-Cell Surface Glycoprotein Cd5 (390-470) is suitable for use in Western Blot and ELISA research applications. |
| Applications | WB, ELISA |
| Host/Source | Rabbit |
| Reactivity | Human, Mouse, Rat |

PRODUCT PROPERTIES

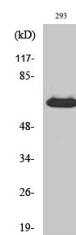
| | |
|-----------------------|--|
| Clonality | Polyclonal |
| Clone ID | |
| Concentration | 1 mg/mL |
| Conjugation | Unconjugated |
| Purification | The antibody was affinity-purified from rabbit anti-serum by affinity-chromatography. |
| Dilution Range | WB 1:500-1:2000 ELISA 1:20000 |
| Formulation | PBS, 50% Glycerol, 0.5% BSA and 0.02% Sodium Azide. |
| Isotype | IgG |
| Storage | Store at -20°C for up to 1 year from the date of receipt, and avoid repeat freeze-thaw cycles. |
| Instruction | |

TARGET INFORMATION

| | |
|---------------------------|---|
| Gene ID | 921 |
| Gene Symbol | CD5 |
| Uniprot ID | CD5_HUMAN |
| Immunogen | The antiserum was produced against synthesized peptide derived from human CD5 at amino acid range 421-470 |
| Immunogen Region | 390-470 |
| Specificity | CD5 polyclonal antibody (T-Cell Surface Glycoprotein Cd5) binds to endogenous T-Cell Surface Glycoprotein Cd5 at the amino acid region 390-470. |
| Immunogen Sequence | |



Western blot analysis of lysates from 293 cells, treated with PMA 125ng/ml 30', using CD5 Antibody. The lane on the right is blocked with the synthesized peptide.



Western blot analysis of various cells using CD5 Polyclonal Antibody