

Anti-PTPRC antibody (950-1030) (STJ92130)

STJ92130

GENERAL INFORMATION

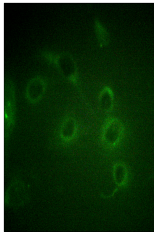
Product Type	Primary antibodies
Short Description	Rabbit polyclonal antibody anti-Receptor-Type Tyrosine-Protein Phosphatase C (950-1030) is suitable for use in Western Blot, Immunohistochemistry, Immunofluorescence, Immunocytochemistry and ELISA research applications.
Applications	WB, IHC-P, IF, ICC, ELISA
Host/Source	Rabbit
Reactivity	Human, Mouse, Rat

PRODUCT PROPERTIES

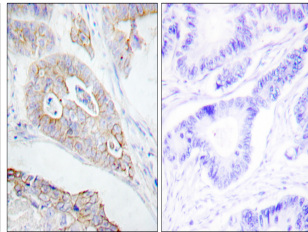
Clonality	Polyclonal
Clone ID	
Concentration	1 mg/mL
Conjugation	Unconjugated
Purification	The antibody was affinity-purified from rabbit anti-serum by affinity-chromatography.
Dilution Range	IHC 1:100-1:300 IF 1:200-1:1000 ELISA 1:5000
Formulation	PBS, 50% Glycerol, 0.5% BSA and 0.02% Sodium Azide.
Isotype	IgG
Storage Instruction	Store at -20°C for up to 1 year from the date of receipt, and avoid repeat freeze-thaw cycles.

TARGET INFORMATION

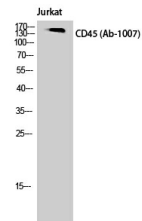
Gene ID	5788
Gene Symbol	PTPRC
Uniprot ID	PTPRC_HUMAN
Immunogen	The antiserum was produced against synthesized peptide derived from human CD45 at amino acid range 981-1030
Immunogen Region	950-1030
Specificity	PTPRC polyclonal antibody (Receptor-Type Tyrosine-Protein Phosphatase C) binds to endogenous Receptor-Type Tyrosine-Protein Phosphatase C at the amino acid region 950-1030.
Immunogen Sequence	



Immunofluorescence analysis of HUVEC cells, using CD45 Antibody. The picture on the right is blocked with the synthesized peptide.



Immunohistochemistry analysis of paraffin-embedded human colon carcinoma tissue, using CD45 Antibody. The picture on the right is blocked with the synthesized peptide.



Western blot analysis of Jurkat cells using CD45 Polyclonal Antibody