

Anti-CD40 antibody (200-280 C-Term) (STJ92128)

STJ92128

GENERAL INFORMATION

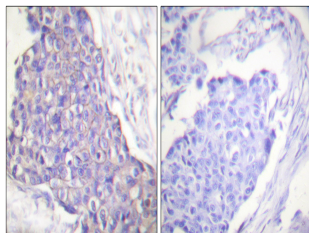
Product Type	Primary antibodies
Short Description	Rabbit polyclonal antibody anti-Tumor Necrosis Factor Receptor Superfamily Member 5 (200-280 C-Term) is suitable for use in Western Blot, Immunohistochemistry, Immunofluorescence and ELISA research applications.
Applications	WB, IHC-P, IF-P, ELISA
Host/Source	Rabbit
Reactivity	Human, Mouse, Monkey

PRODUCT PROPERTIES

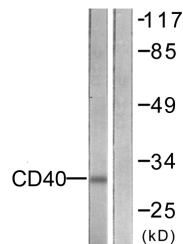
Clonality	Polyclonal
Clone ID	
Concentration	1 mg/mL
Conjugation	Unconjugated
Purification	The antibody was affinity-purified from rabbit anti-serum by affinity-chromatography.
Dilution Range	WB 1:500-1:2000 IHC 1:100-1:300 ELISA 1:10000
Formulation	PBS, 50% Glycerol, 0.5% BSA and 0.02% Sodium Azide.
Isotype	IgG
Storage Instruction	Store at -20°C for up to 1 year from the date of receipt, and avoid repeat freeze-thaw cycles.

TARGET INFORMATION

Gene ID	958
Gene Symbol	CD40
Uniprot ID	TNR5_HUMAN
Immunogen	The antiserum was produced against synthesized peptide derived from human CD40 at amino acid range 228-277
Immunogen Region	200-280 C-Term
Specificity	CD40 polyclonal antibody (Tumor Necrosis Factor Receptor Superfamily Member 5) binds to endogenous Tumor Necrosis Factor Receptor Superfamily Member 5 at the amino acid region 200-280 C-Term.
Immunogen Sequence	



Immunohistochemistry analysis of paraffin-embedded human breast carcinoma tissue, using CD40 Antibody. The picture on the right is blocked with the synthesized peptide.



Western blot analysis of lysates from COS7 cells, using CD40 Antibody. The lane on the right is blocked with the synthesized peptide.



Western blot analysis of various cells using CD40 Polyclonal Antibody

This product is suitable for in-vitro studies under the RESEARCH USE ONLY [RUO] licence. This product must not be used as for diagnostic or other medical purposes.
St John's Laboratory Ltd, Knowledge Dock Business Centre, University Way, London, E16 2RD | Tel: 0208 223 3081